



Colliers

Retail and Industrial Lots

sold



sold

Lot 110

Lot 102

Lot 111

Retail
Lot 101

Lot 112

Retail
Lot 113

Eagle Mountain Blvd.

Land for sale

Asking Price:

\$11.50 SF/ Industrial

\$20 SF/ Retail

Rush Creek

6000 N. Eagle Mtn. Blvd.
Eagle Mountain, UT 84005

Property Information

- 1.07-160 Acres
- Phase 1- 13 lots
 - Retail Lots 101 and 113
 - Light Industrial Lots 102-112
 - 1.07-20 acres available
- Phase 2 - 21 lots
 - .99 - 4.64 acres available
- Phase 3 - 13 lots
 - 1 -4.11 acres available

Zoned LMD

- Power and fiber
- Utilities to site

For Sale: \$11.50/SF Industrial

For Sale: \$20.00/SF Retail

Contact:

Dan Ford, MBA

Senior Vice President

+1 801 420 0137

dan.ford@colliers.com

Colliers

2100 Pleasant Grove Blvd., Suite 200

Pleasant Grove, UT 84062

Main: +1 801 947 8300

colliers.com

Accelerating success.

Site Plan

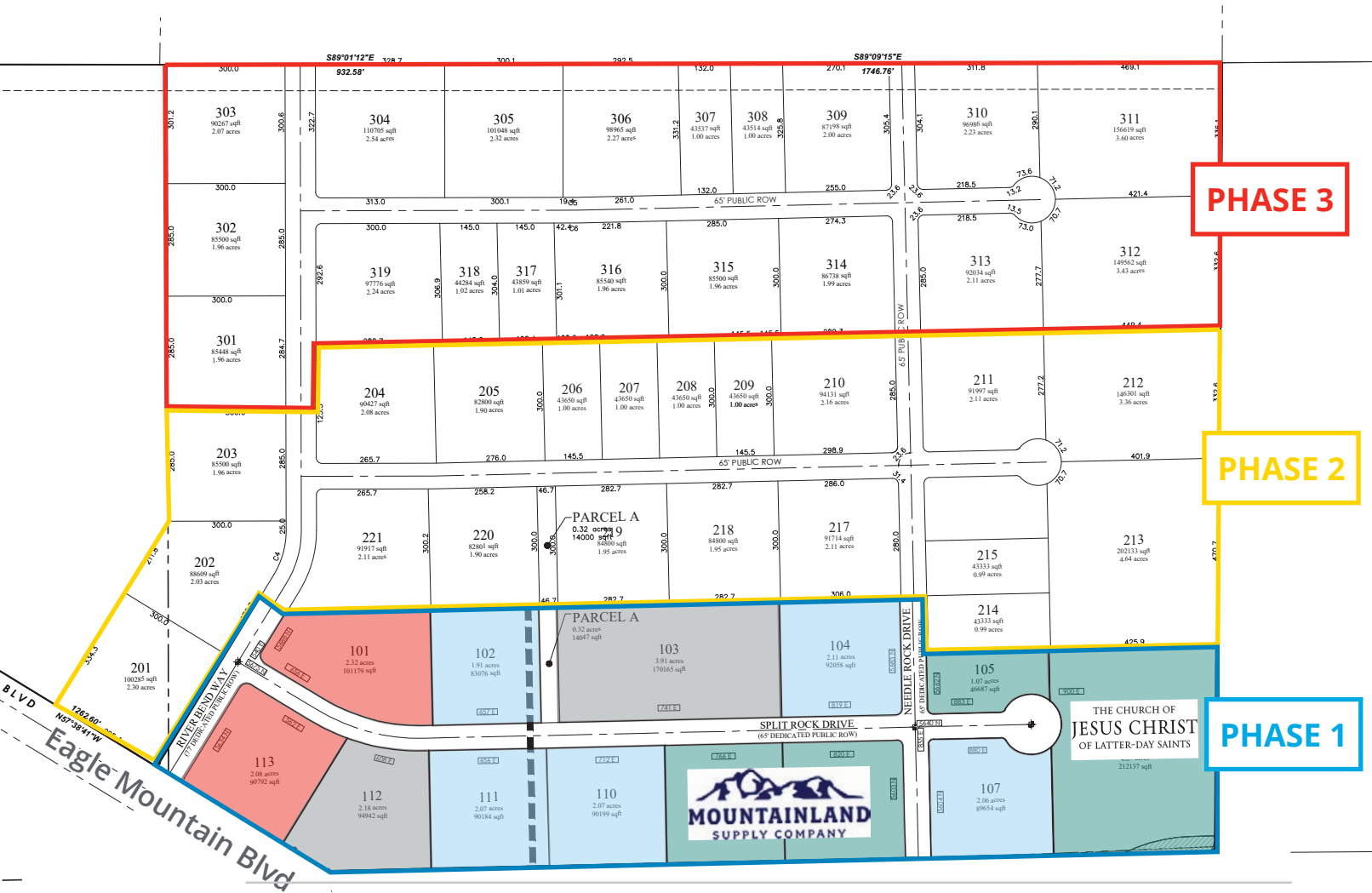
Rush Creek: Phase 1- 4

Retail Available

Industrial Available

Under Contract

Sold



PHASE 3

PHASE 2

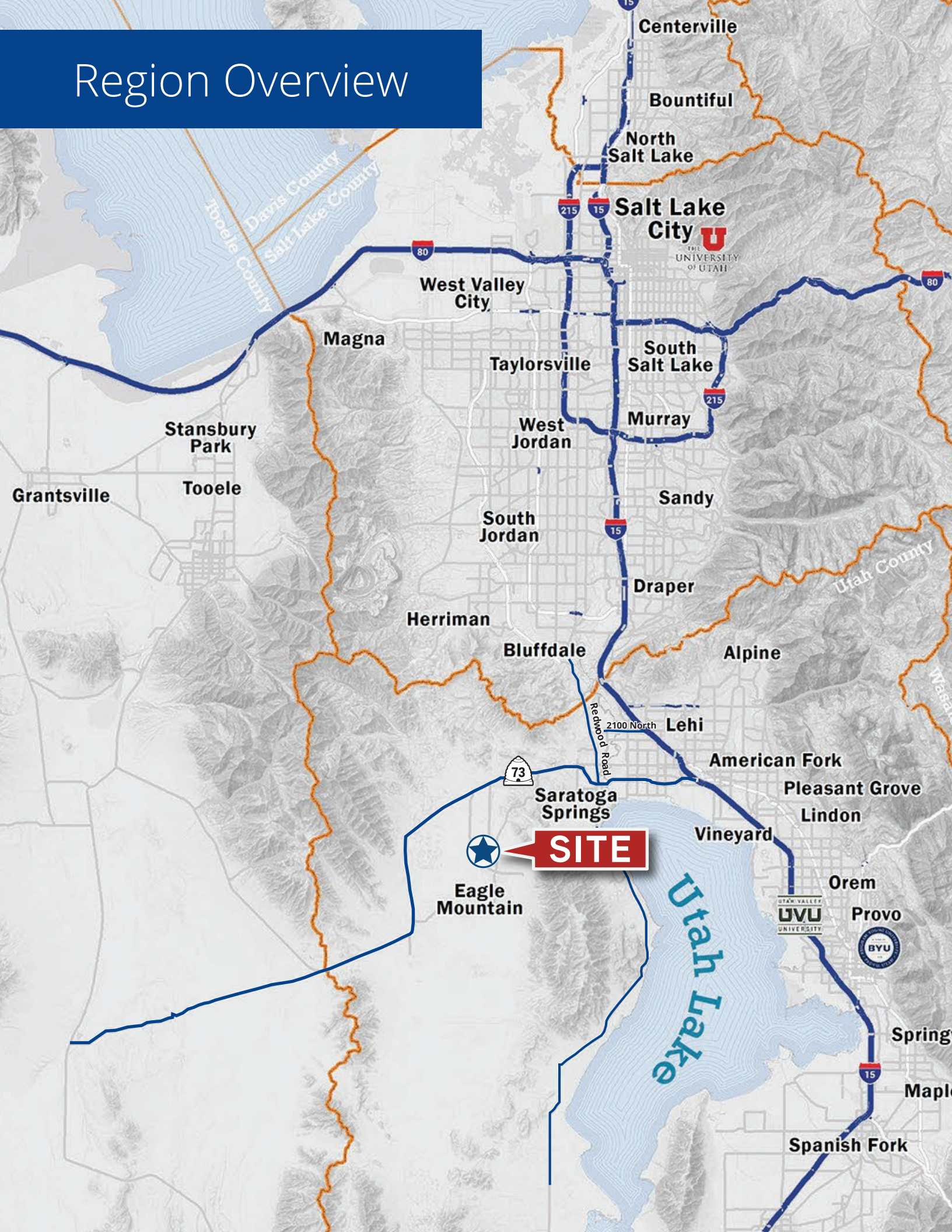
PHASE 1



THE CHURCH OF JESUS CHRIST OF LATTER-DAY SAINTS

Eagle Mountain Blvd

Region Overview





Colliers
 2100 Pleasant Grove Blvd., Suite 200
 Pleasant Grove, UT 84062
 Main: +1 801 947 8300
 colliers.com

Dan Ford, MBA
 Senior Vice President
 +1 801 420 0137
 dan.ford@colliers.com

This document has been prepared by Colliers International for advertising and general information only. Colliers International makes no guarantees, representations or warranties of any kind, expressed or implied, regarding the information including, but not limited to, warranties of content, accuracy and reliability. Any interested party should undertake their own inquiries as to the accuracy of the information. Colliers International excludes unequivocally all inferred or implied terms, conditions and warranties arising out of this document and excludes all liability for loss and damages arising there from. This publication is the copyrighted property of Colliers International and/or its licensor(s). ©2024. All rights reserved.