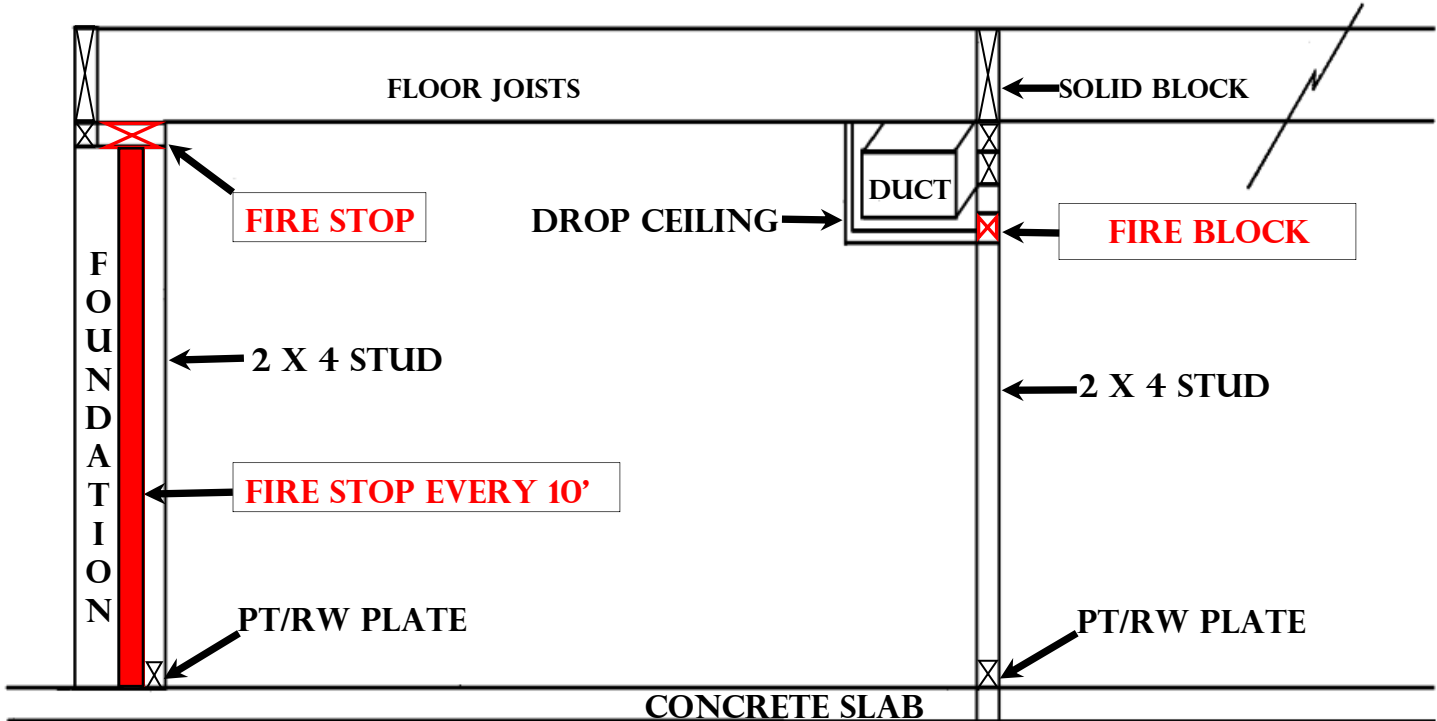




## FIRE STOP REQUIREMENTS

MATERIALS ALLOWED BY CODE (IRC Sec. 302.11.1)

- 2 X wood Lumber (minimum)
- 3/4 " Plywood (minimum)
- 1/2 " Sheetrock (minimum)
- 26 GA. Sheet Metal (minimum)
- Mineral Wool or Fiberglass



- The full height of the stud wall every 10' max. horizontal distance
- Fire stops shall be installed where exterior framed walls have slight space from the end wall.
- fire stop the top of this same wall separating the horizontal joist cavities from the vertical space behind the studs.