



Accelerating success.



Office For Lease

Lease Rate:

\$26.00/SF
Full Service

Contact us:

Rusty Lugo

Vice President
+1 801 947 8377
rusty.lugo@colliers.com

Colliers

6440 S. Millrock Dr., Suite 500
Salt Lake City, UT 84121
Main: +1 801 947 8300
colliers.com

Artist's Rendition - Design TBD

Eagle Mountain Office Complex

Eagle Mountain Blvd. & Pony Express Pkwy.
(NWC)

Eagle Mountain, Utah 84005

Property Highlights

- Coming to Eagle Mountain!
New Office Opportunity
- 2-story, 12,000 SF building
- 2,000 to 12,000 SF available
- Competitive Tenant
Improvement Allowance
- Individual office suites available
offering flexible lease terms

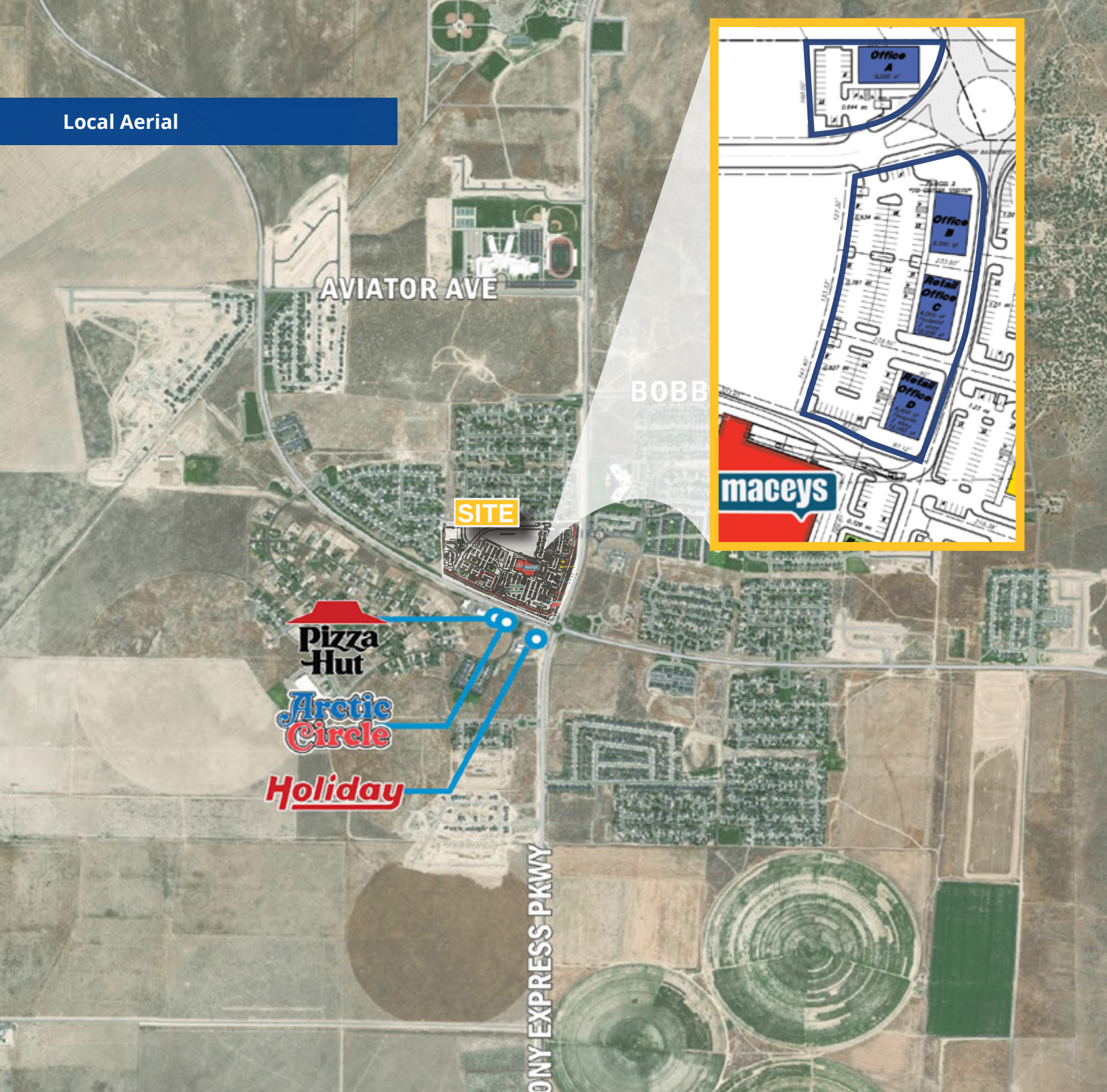
Demographics	1 Mile	3 Miles	5 Miles
Population			
2020 Estimated	9,225	11,021	33,197
2025 Projected	12,338	14,902	41,174
Households			
2020 Estimated	2,086	2,502	7,874
2025 Projected	2,791	3,385	9,741
Income			
2020 Median HHI	\$63,065	\$63,994	\$77,168
2020 Average HHI	\$80,071	\$82,042	\$90,659
2020 Per Capita	\$18,018	\$18,586	\$21,253

Information provided by ESRI Business Analyst

Site Plan



Local Aerial



Contact:

Rusty Lugo

Vice President
+1 801 947 8377
rusty.lugo@colliers.com

Colliers

6440 S. Millrock Dr., Suite 500
Salt Lake City, UT 84121
Main: +1 801 947 8300
colliers.com

This document has been prepared by Colliers International for advertising and general information only. Colliers International makes no guarantees, representations or warranties of any kind, expressed or implied, regarding the information including, but not limited to, warranties of content, accuracy and reliability. Any interested party should undertake their own inquiries as to the accuracy of the information. Colliers International excludes unequivocally all inferred or implied terms, conditions and warranties arising out of this document and excludes all liability for loss and damages arising there from. This publication is the copyrighted property of Colliers International and/or its licensor(s). ©2021. All rights reserved.

Colliers

Accelerating success.