

Eagle Mountain City, Utah

RESOLUTION NO. R-02 -2010

**A RESOLUTION OF THE CITY COUNCIL OF
OF EAGLE MOUNTAIN CITY, UTAH,
ADOPTING AND APPROVING A CITY CENTER
OPEN SPACE IMPROVEMENT PLAN FOR
EAGLE MOUNTAIN CITY**

WHEREAS, the City Council of Eagle Mountain City, Utah, finds that Eagle Mountain City benefits from a comprehensive review of the needs of the current and future population of the City for parks and open space to serve the recreational needs of residents of the City; and

WHEREAS, the City Council has caused a City Center Open Space Improvement Plan to be prepared, published and reviewed by the Planning Commission and staff and by the public; and

WHEREAS, the City Council finds that the City Center Open Space Improvement Plan presented to the City Council on February 16, 2010, complies with the objectives of the City Council with suitable goals and objectives for the City with respect to future planning and development and the implementation of a City Center Open Space Improvement Plan;

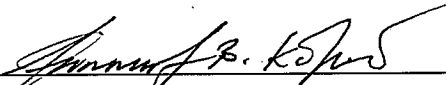
NOW THEREFORE, be it resolved by the City Council of Eagle Mountain City, Utah, that the "City Center Open Space Improvement Plan" of February 16, 2010, which is presented as Exhibit A to this Resolution, be and the same hereby is adopted and enacted as the City Center Open Space Improvement Plan for Eagle Mountain City, to be integrated into all future planning and development as proposed in the City Center Open Space Improvement Plan for Eagle Mountain City.

This Resolution shall take effect upon its enactment by the City Council.

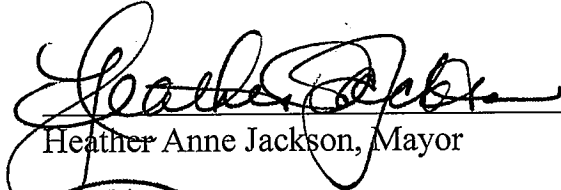
ADOPTED by the City Council of Eagle Mountain City, Utah, this 16th day of February, 2010.

EAGLE MOUNTAIN CITY, UTAH

ATTEST:



Fionnuala B. Kofoed, City Recorder



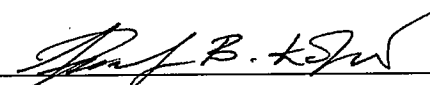
Heather Anne Jackson, Mayor



CERTIFICATION

The above resolution was adopted by the City Council of Eagle Mountain City on the 16th day of February, 2010.

 3 voting aye 2 voting nay



Fionnuala B. Kofoed, City Recorder

EXHIBIT

A



EAGLE
M O U N T A I N

Open Space Improvement Plan City Center

This plan is designed to prioritize the improvement of the streetscapes, parks, trails, and corridor spaces in the City Center, as well as estimate the cost for improvement of each project, in order to assist the City when seeking grants, preparing the budget, and deciding on projects, and to provide the residents of Eagle Mountain a general schedule for adding more amenities and green space to their neighborhoods. There are four categories in this plan: streetscapes, parks, paseos/corridor spaces, and trails. Projects within each category are prioritized based on visibility, connectivity, subdivision longevity, need, and available grant money. The intent is not necessarily to improve streetscape priority 1, then park priority 1, then corridor priority 1, etc., but based on the prioritization factors, the City could improve park priorities 1 and 2 before improving the first project in another category. The attached map provides a visual representation of each prioritized/categorized project.

STREETSCAPES

Streetscapes (the areas immediately adjacent to the road) along major roads will be landscaped with a mix of xeriscape, grass/turf, street trees, with a drip irrigation system. These will be consistent with the landscaping that has been completed in the medians and roundabouts in the City Center. The cost of completion is estimated to be \$2.50 per square foot.

Streetscapes

Priority	Project	Area	Cost*
1	Eagle Park (Sweetwater)	3.8 acres	\$415,000
2	The Landing (EM Blvd)	2 acres	\$218,000
3	Mountain View (EM Blvd)	2.5 acres	\$272,000
4	Eagle Point (EM Blvd)	3.3 acres	\$360,000
5	Bobby Wren - Pioneer Addition	1.2 acres	\$130,000
6	Bobby Wren - Eagle Park	1.4 acres	\$152,000
<i>Total</i>		<i>14.2 acres</i>	<i>\$1,547,000</i>



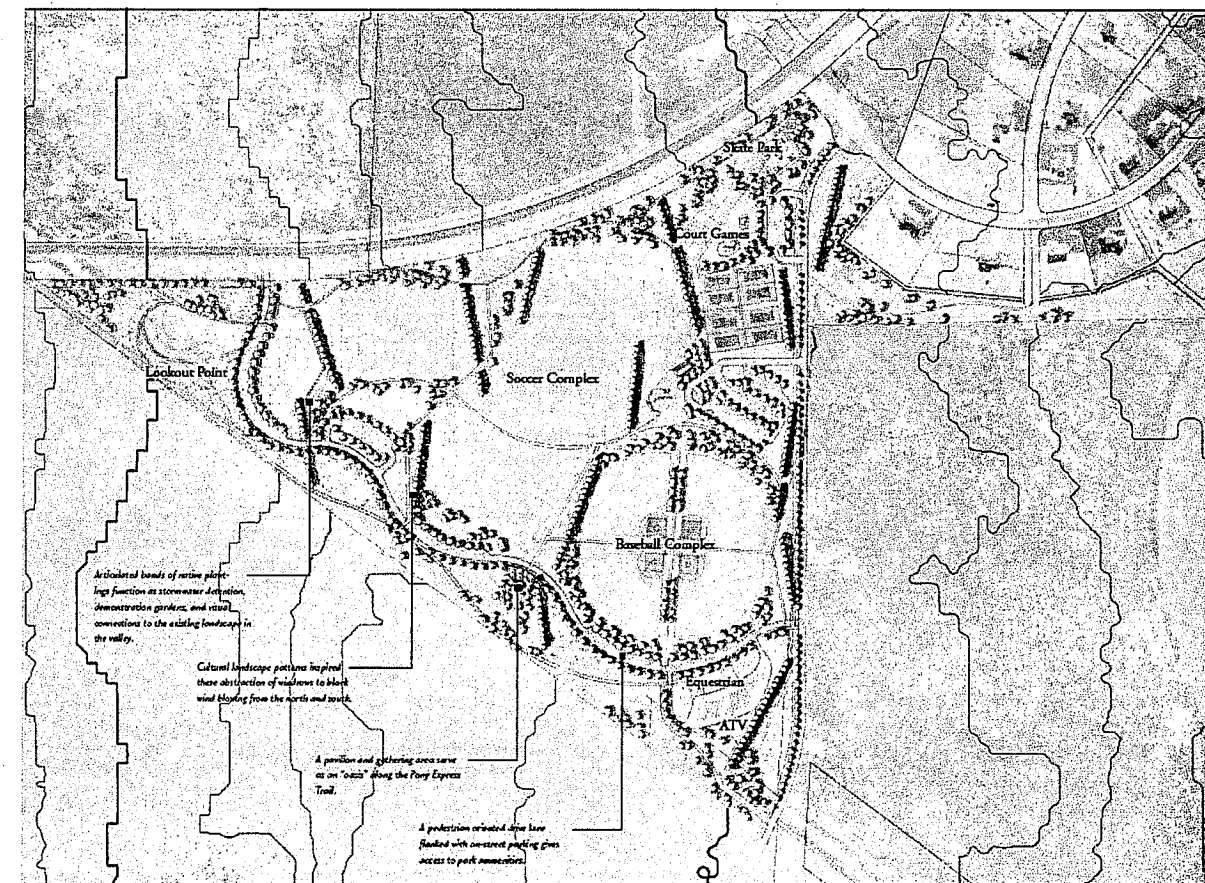
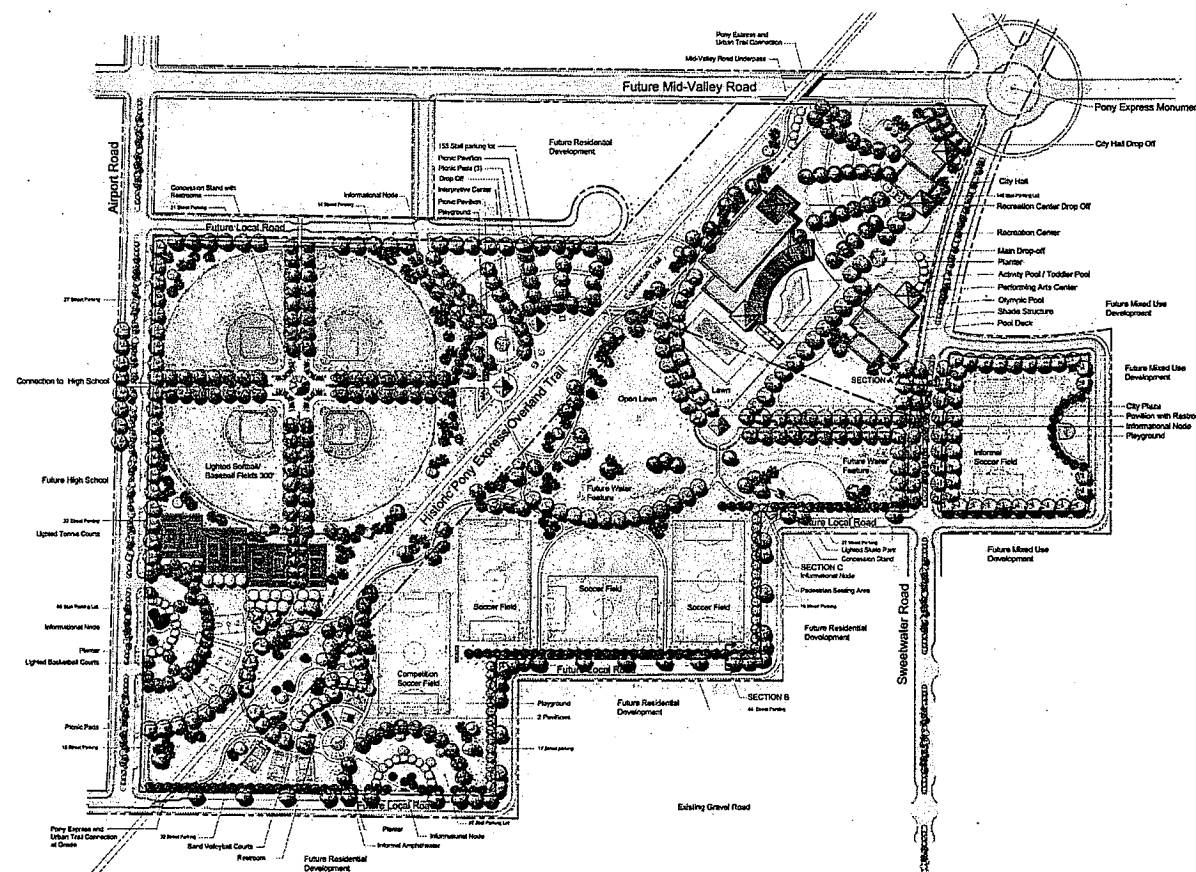
* Costs are estimates based on recent city open space projects and the Parks and Open Space Master Plan. Actual costs will vary from these estimates.

PARKS

There are a variety of parks in the City Center that need to include additional amenities and landscaping. Additional baseball diamonds are needed for the City recreation program, and amenities will be added to neighborhood parks throughout the City Center. Most of these parks have concept designs that will be substantially followed. In some cases, the concept designs may be altered upon approval by the City Council. Park completion costs are generally around \$4.50-\$6.75 per square foot, which includes amenities as well as landscaping.

Parks

Priority	Project	Area	Cost*	Description
1	Walden Park	1.1 acres	\$50,000	Completion of the Detention Basin
2	Mid-Valley Park Phase 1	12 acres	\$650,000 - \$800,000	Baseball diamonds, Splash pad, Parking, Restroom
3	Eagle Point	0.56 acres	\$110,000 - \$165,000	Area just east of Sweetwater Park – Design TBD
4	Pioneer Park	N/A	\$61,000	Removing Volleyball & replacing with a Tennis Court
5	Pony Express Regional Park Phase 1	TBD	TBD	Another phase of the park - amenities to be determined
<i>Total</i>		<i>+15 acres</i>	<i>\$871,000 +</i>	<i>Total cost does not include the Pony Express Park improvements.</i>



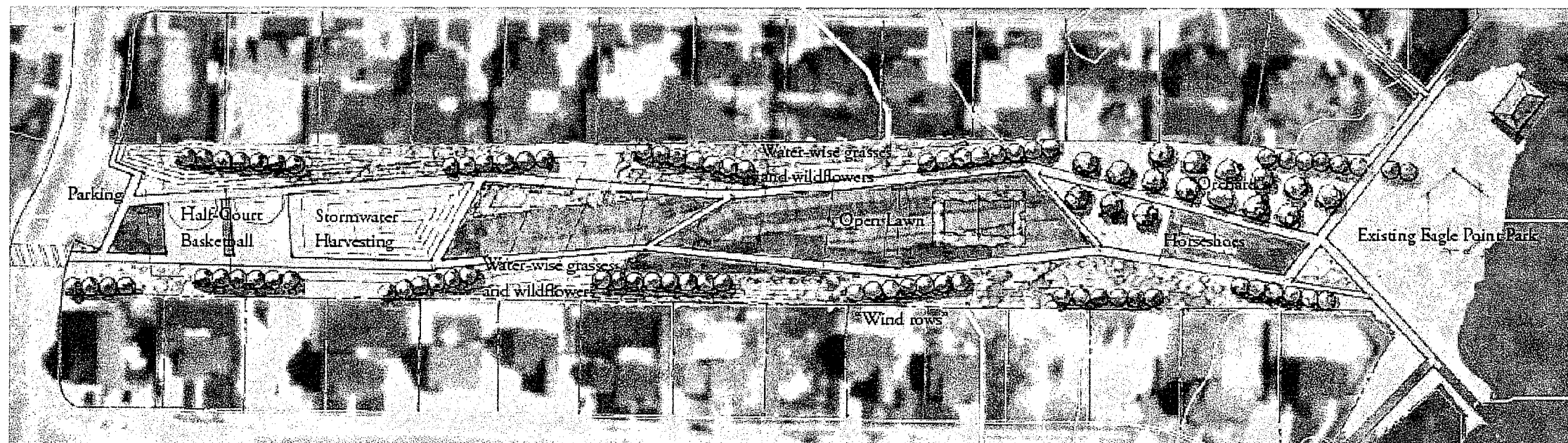
* Costs are estimates based on recent city open space projects and the Parks and Open Space Master Plan. Actual costs will vary from these estimates.

PASEOS / CORRIDOR SPACES

The various open space corridors/paseos between the subdivisions will be improved with a mixture of xeriscape, enhanced/ornamental native plantings, trees, and some grass/turf, with a drip irrigation system. The Eagle Point Paseo Park has a concept design that will be followed and constructed in phases. The general cost for these areas is around \$1.70 (low end) - \$2.30 (high end) / square foot. The low end improvements include: grading, hydro-seeding, and temporary irrigation. The high end improvements include: grading, hydro-seeding, and permanent irrigation. Surveys and/or neighborhood meetings to obtain comments concerning the design of the corridors will be distributed/held as needed and determined by City Staff or the City Council.

Paseos / Corridor Spaces

Priority	Project	Area	Cost*
1	Eagle Point Paseo Park (Phase 1)	+ 1.6 acres	\$400,000 - \$510,000
2	Corridor between Mtn View/Pioneer Addition	2.29 acres	\$170,000 - \$230,000
3	Eagle Park East/West Corridor	2.4 acres	\$175,000 - \$240,000
4	Corridor between The Landing/Mtn View South	2.13 acres	\$158,000 - \$215,000
5	Eagle Point Paseo Park (Phase 2)	+ 2 acres	\$500,000 - \$640,000
6	Cedar Trails Corridor	0.66 acres	\$50,000 - \$66,000
7	Corridor between The Landing/Mtn View North	1.27 acres	\$95,000 - \$130,000
8	Corridor between Cedar Trails & Pioneer Add 1	+ 3.5 acres	\$260,000 - \$360,000
9	Corridor Eagle Point A SW Side / Between B&C	1.77 acres	\$131,000 - \$177,000
10	Corridor Eagle Point A Northwest Side	1.75 acres	\$130,000 - \$175,000
11	The Landing West Side Corridor	1.03 acres	\$75,000 - \$103,000
<i>Total</i>		<i>20.4 acres</i>	<i>\$2,144,000 - \$2,846,000</i>



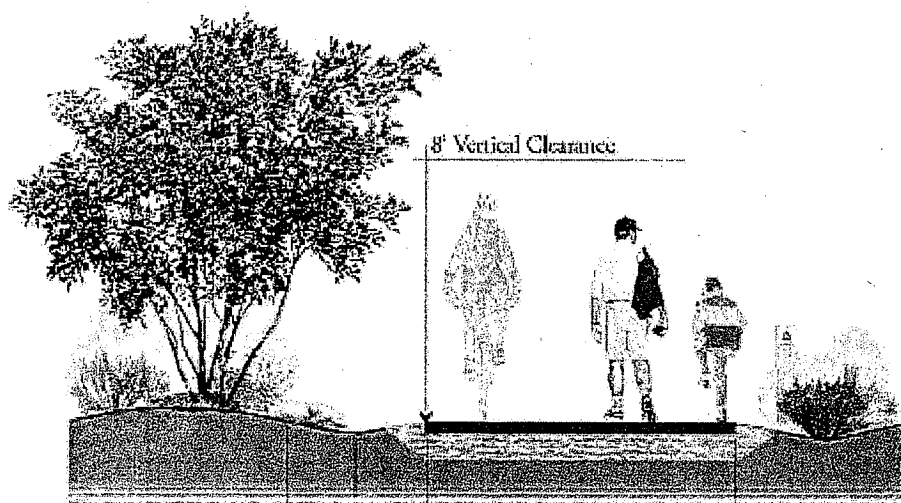
* Costs are estimates based on recent city open space projects and the Parks and Open Space Master Plan. Actual costs will vary from these estimates.

TRAILS

Connecting neighborhoods, schools, parks, and City Hall with trails is vital to improving the quality of life and providing additional recreation opportunities for the residents in the City Center. A majority of trails will be 8-foot asphalt trails, and generally cost about \$40 per linear foot for clearing/grading, materials, and construction. A couple of the trails will actually be 4-foot concrete sidewalks, as they will connect with other existing sidewalks. These are estimated at \$25 per linear foot for clearing/grading, materials, and construction.

Trails

Priority	Project	Length	Material	Cost*
1	Shadow Dr to Springwater Way	895 feet	Asphalt	\$35,800
2	Shadow Drive	500 feet	Sidewalk	\$12,500
3	Eagle Park / Autumn Ridge 1	3,750 feet	Asphalt	\$150,000
4	Eagle Park / Autumn Ridge 2	250 feet	Sidewalk	\$6,250
5	Sweetwater Northwest	1,200 feet	Asphalt	\$48,000
6	Sweetwater Southwest	1,450 feet	Asphalt	\$58,000
7	Library/Sweetwater Northeast	2,260 feet	Asphalt	\$90,400
8	EM Boulevard North	1,500 feet	Asphalt	\$60,000
9	Bobby Wren Boulevard	5,780 feet	Asphalt	\$231,200
10	Overland Trails	3,000 feet	Asphalt	\$120,000
<i>Total</i>		<i>20,585 feet</i>		<i>\$812,150</i>



* Costs are estimates based on recent city open space projects and the Parks and Open Space Master Plan. Actual costs will vary from these estimates.

MISCELLANEOUS

There are a few additional methods the City may consider to improve the open space areas, including:

- Community Gardens. Community gardens provide for improvement of open space that provides a benefit for residents of smaller lots, townhomes, and other multi-family development.
- Temporary improvement of City-owned open space. The City is currently pursuing the possibility of allowing temporary use of certain unimproved city property. If allowed, documentation would have to be filed with the City and approval given prior to any use of city-owned land.
- Disposal of Public Land. The City has a “Disposal of Public Land” ordinance, with associated map exhibits, that designate certain public properties that can be “disposed of” or sold at a very cheap price to an adjacent property owner. The maps and applications are available in the City Recorder’s Office.

FUNDING

The completion of these projects is fully dependent on available funds. The cost of each project has been estimated based on recent City open space projects and on standard costs in the Parks and Open Space Master Plan. With an increased amount of parks and improved open space also comes an increased maintenance cost to the City. This should be considered along with the other information in this document when budgeting for these improvements. The following methods of funding will be employed in the improvement of these open spaces:

- Grants. The City is constantly pursuing grants for many purposes, including the improvement of open space. As an example, grants were used to fund the trail along Sweetwater Road connecting the City Center to the Ranches, and used to fund the first phase of Mid-Valley Park (soccer/football field).
- Assessment District. A special assessment district may be formed for the funding of specific improvements/amenities.
- A Bond. Park and open space improvements may be completed with a general obligation bond, if residents approve it through a vote.
- General Fund. General landscaping, grass, irrigation, etc. will likely be funded through the City’s General Fund.
- A Neighborhood Matching Grant Program. Neighborhood groups, HOAs, or others may put forward money and resources for improvement of an open space project, and the City could provide an additional amount, thus funding the project prior to its schedule on the priority list. The decision for funding would be made by the City Council. The money for this program would come from the City’s General Fund.

Totals

Project	Area	Cost*
Streetscapes	14.2 acres	\$1,547,000
Parks	+15 acres	\$871,000 +
Paseos / Corridor Areas	20.4 acres	\$2,144,000 - \$2,846,000
Trails	20,585 feet	\$812,150
<i>Total</i>	49.6 acres 20,585 linear feet	\$5,374,150 – \$6,076,150

PLAN REVIEW

This plan is intended to be a living document, and should be reviewed and revised at least once each year to provide the residents and City Council with updated information and an updated plan for budgeting purposes.

* Costs are estimates based on recent city open space projects and the Parks and Open Space Master Plan. Actual costs will vary from these estimates.



Trails Priorities

- 1-Shadow Dr to Springwater Wy
- 2-Shadow Drive
- 3-Eagle Park/Autumn Ridge 1
- 4-Eagle Park/Autumn Ridge 2
- 5-Sweetwater Northwest
- 6-Sweetwater Southwest
- 7-Library/Sweetwater Northeast
- 8-EM Boulevard North
- 9-Bobby Wren Blvd
- 10-Overland Trails

Park Priorities

- 1-Walden Park
- 2-Mid-Valley Ph. 1
- 3-Eagle Point
- 4-Poineer Park
- 5-Pony Express Regional Ph. 1

Streetscapes Priorities

- 1-Eagle Park Sweetwater
- 2-The Landing EM Blvd
- 3-Mountain View EM Blvd
- 4-Eagle Point EM Blvd
- 5-Bobby Wren Pioneer Add
- 6-Bobby Wren Eagle Park

Paseos/Corridor Priorities

- 1-Eagle Point Paseo Park Ph. 1
- 2-Corr Between Mtn View/Pioneer Add
- 3-Eagle Park East/West Corr
- 4-Corr Between Landing/Mtn View South
- 5-Eagle Point Paseo Park Ph. 2
- 6-Cedar Trails Corr
- 7-Corr Between The Landing & Mtn View north
- 8-Corr Between Cedar Trails & Poineer 1
- 9-Corr Eagle Point A SW Side/Between B & C
- 10-Corr Eagle Point A North West Side
- 11-Landing West Side Corr

**Open Space Improvement Plan
City Center**