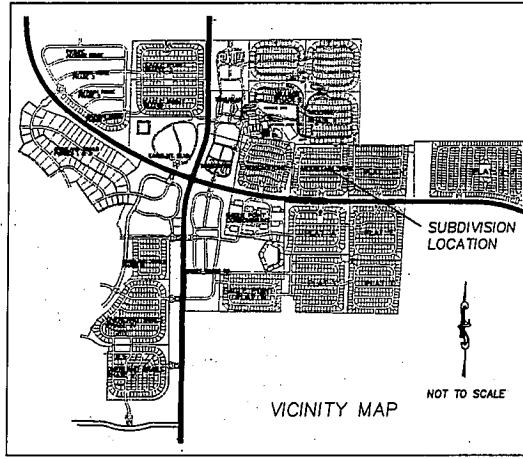
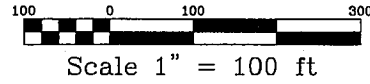


MOUNTAIN VIEW SUBDIVISION PHASE 2



SURVEYOR'S CERTIFICATE

I, BRIG CHRISTENSEN, DO HEREBY CERTIFY THAT I AM A REGISTERED LAND SURVEYOR, AND THAT I HOLD CERTIFICATE NO. 14279 AS PRESCRIBED UNDER THE LAWS OF THE STATE OF UTAH. I FURTHER CERTIFY BY AUTHORITY OF THE OWNERS I HAVE MADE A SURVEY OF THE TRACT OF LAND SHOWN ON THIS PLAN AND DESCRIBED BELOW AND HAVE SUBDIVIDED SAID TRACT OF LAND INTO LOTS, BLOCKS, STREETS, AND EASEMENTS AND THE SAME HAS BEEN CORRECTLY SURVEYED AND STAKED ON THE GROUND AS SHOWN ON THIS PLAN AND THAT THIS IS TRUE AND CORRECT.

PHASE 2 BOUNDARY DESCRIPTION

COMMENCING AT A POINT ON THE EAST BOUNDARY OF THE LANDS AT EAGLE MOUNTAIN PHASE 2, SAID POINT BEING NORTH 89°31'00" WEST ALONG THE SECTION LINE 218.77 FEET AND NORTH 81°32'30" WEST FROM THE SOUTHEAST CORNER OF SECTION 12, T6S, R2W, SLB&M;

THENCE SOUTH 71°07'00" WEST 6.0 FEET TO THE BEGINNING OF A NON-TANGENT CURVE CONCAVE TO THE NORTHEAST AND HAVING A RADIUS OF 60.00 FEET, A RADIAL LINE BEARS SOUTH 18°22'27" WEST;

THENCE SOUTHWESTERLY 51.14 FEET ALONG SAID CURVE THROUGH A CENTRAL ANGLE OF 309°04'41" (CHORD BEARING AND DISTANCE OF SAID CURVE BEING NORTH 80°15'11" EAST 28.33 FEET);

THENCE SOUTHEAST 100.00 FEET;

THENCE SOUTHWESTERLY 28.78 FEET ALONG SAID CURVE THROUGH A CENTRAL ANGLE OF 43°28'13" (CHORD BEARING AND DISTANCE OF SAID CURVE BEING SOUTH 82°47'59" EAST 74.61 FEET) TO THE BEGINNING OF A COMPOUND CURVE CONCAVE TO THE NORTHEAST AND HAVING A RADIUS OF 20.00 FEET;

THENCE NORTHEASTERLY 31.47 FEET ALONG SAID CURVE THROUGH A CENTRAL ANGLE OF 80°07'40" (CHORD BEARING AND DISTANCE OF SAID CURVE BEING NORTH 80°15'11" EAST 28.33 FEET);

THENCE SOUTHWESTERLY 33.07 FEET ALONG SAID CURVE THROUGH A CENTRAL ANGLE OF 84°44'17" (CHORD BEARING AND DISTANCE OF SAID CURVE BEING SOUTH 42°07'16" EAST 29.43 FEET);

THENCE SOUTH 02°05'40" WEST 90.00 FEET TO THE BEGINNING OF A NON-TANGENT CURVE CONCAVE TO THE SOUTHWEST AND HAVING A RADIUS OF 30.00 FEET, A RADIAL LINE BEARS SOUTH 84°45'11" EAST;

THENCE SOUTHWESTERLY 33.07 FEET ALONG SAID CURVE THROUGH A CENTRAL ANGLE OF 84°44'17" (CHORD BEARING AND DISTANCE OF SAID CURVE BEING SOUTH 42°07'16" EAST 29.43 FEET);

THENCE SOUTH 02°05'40" WEST 90.00 FEET TO THE BEGINNING OF A NON-TANGENT CURVE CONCAVE TO THE SOUTHWEST AND HAVING A RADIUS OF 30.00 FEET, A RADIAL LINE BEARS SOUTH 84°45'11" EAST;

THENCE SOUTHWESTERLY 33.07 FEET ALONG SAID CURVE THROUGH A CENTRAL ANGLE OF 84°44'17" (CHORD BEARING AND DISTANCE OF SAID CURVE BEING SOUTH 42°07'16" EAST 29.43 FEET);

THENCE SOUTH 02°05'40" WEST 90.00 FEET TO THE BEGINNING OF A NON-TANGENT CURVE CONCAVE TO THE SOUTHWEST AND HAVING A RADIUS OF 30.00 FEET, A RADIAL LINE BEARS SOUTH 84°45'11" EAST;

THENCE SOUTHWESTERLY 33.07 FEET ALONG SAID CURVE THROUGH A CENTRAL ANGLE OF 84°44'17" (CHORD BEARING AND DISTANCE OF SAID CURVE BEING SOUTH 42°07'16" EAST 29.43 FEET);

THENCE SOUTH 02°05'40" WEST 90.00 FEET TO THE BEGINNING OF A NON-TANGENT CURVE CONCAVE TO THE SOUTHWEST AND HAVING A RADIUS OF 30.00 FEET, A RADIAL LINE BEARS SOUTH 84°45'11" EAST;

THENCE SOUTHWESTERLY 33.07 FEET ALONG SAID CURVE THROUGH A CENTRAL ANGLE OF 84°44'17" (CHORD BEARING AND DISTANCE OF SAID CURVE BEING SOUTH 42°07'16" EAST 29.43 FEET);

THENCE SOUTH 02°05'40" WEST 90.00 FEET TO THE BEGINNING OF A NON-TANGENT CURVE CONCAVE TO THE SOUTHWEST AND HAVING A RADIUS OF 30.00 FEET, A RADIAL LINE BEARS SOUTH 84°45'11" EAST;

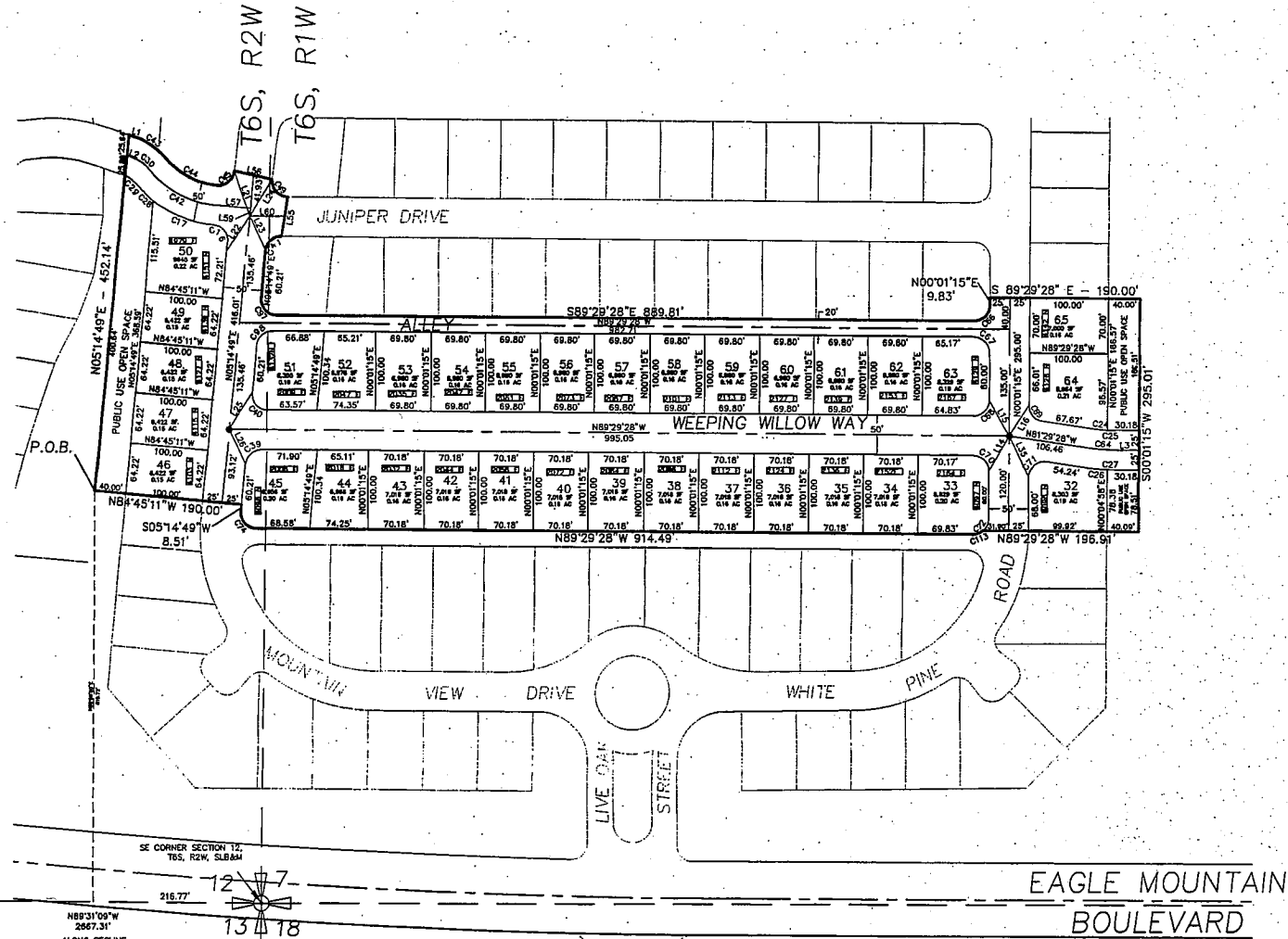
THENCE SOUTHWESTERLY 33.07 FEET ALONG SAID CURVE THROUGH A CENTRAL ANGLE OF 84°44'17" (CHORD BEARING AND DISTANCE OF SAID CURVE BEING SOUTH 42°07'16" EAST 29.43 FEET);

THENCE SOUTH 02°05'40" WEST 90.00 FEET TO THE POINT OF BEGINNING.

CONTAINING 6.99 ACRES MORE OR LESS.

7-22-99
DATE

[Signature]
SURVEYOR
(SEE SEAL BELOW)



LINE TABLE

LINE	LENGTH	BEARING
L1	1.84	S89°29'28" W
L2	1.84	S89°29'28" W
L3	1.84	S89°29'28" W
L4	1.84	S89°29'28" W
L5	1.84	S89°29'28" W
L6	1.84	S89°29'28" W
L7	1.84	S89°29'28" W
L8	1.84	S89°29'28" W
L9	1.84	S89°29'28" W
L10	1.84	S89°29'28" W
L11	1.84	S89°29'28" W
L12	1.84	S89°29'28" W
L13	1.84	S89°29'28" W
L14	1.84	S89°29'28" W
L15	1.84	S89°29'28" W
L16	1.84	S89°29'28" W
L17	1.84	S89°29'28" W
L18	1.84	S89°29'28" W
L19	1.84	S89°29'28" W
L20	1.84	S89°29'28" W
L21	1.84	S89°29'28" W
L22	1.84	S89°29'28" W
L23	1.84	S89°29'28" W
L24	1.84	S89°29'28" W
L25	1.84	S89°29'28" W
L26	1.84	S89°29'28" W
L27	1.84	S89°29'28" W
L28	1.84	S89°29'28" W
L29	1.84	S89°29'28" W
L30	1.84	S89°29'28" W
L31	1.84	S89°29'28" W
L32	1.84	S89°29'28" W
L33	1.84	S89°29'28" W
L34	1.84	S89°29'28" W
L35	1.84	S89°29'28" W
L36	1.84	S89°29'28" W
L37	1.84	S89°29'28" W
L38	1.84	S89°29'28" W
L39	1.84	S89°29'28" W
L40	1.84	S89°29'28" W
L41	1.84	S89°29'28" W
L42	1.84	S89°29'28" W
L43	1.84	S89°29'28" W
L44	1.84	S89°29'28" W
L45	1.84	S89°29'28" W
L46	1.84	S89°29'28" W
L47	1.84	S89°29'28" W
L48	1.84	S89°29'28" W
L49	1.84	S89°29'28" W
L50	1.84	S89°29'28" W
L51	1.84	S89°29'28" W
L52	1.84	S89°29'28" W
L53	1.84	S89°29'28" W
L54	1.84	S89°29'28" W
L55	1.84	S89°29'28" W
L56	1.84	S89°29'28" W
L57	1.84	S89°29'28" W
L58	1.84	S89°29'28" W
L59	1.84	S89°29'28" W
L60	1.84	S89°29'28" W

CURVE TABLE

CURVE	LENGTH	RADIUS	DELTA	TANGENT	DIRECTION	CHORD
C1	33.07	20.00	119.0000	20.84	N84°45'11" E	28.33
C2	60.00	60.00	90.0000	60.00	N84°45'11" E	60.00
C3	14.88	20.00	142.5411	7.86	N71°20'37" W	14.83
C4	14.88	20.00	142.5411	7.86	S82°39'23" W	14.83
C5	33.07	20.00	84.3818	21.67	N89°18'21" E	28.33
C6	33.07	20.00	84.3818	21.67	S89°18'21" W	28.33
C7	29.91	20.00	80.6444	18.55	N115°50'18" E	27.20
C8	18.12	20.00	143.8107	7.84	N103°27'41" E	14.76
C9	18.12	20.00	143.8107	7.84	S82°32'44" E	14.76
C10	33.07	20.00	84.3818	21.67	S82°32'44" E	28.33
C11	33.07	20.00	84.3818	21.67	N82°32'44" W	28.33
C12	18.47	20.00	147.2107	8.73	S104°48'27" W	18.50
C13	18.47	20.00	147.2107	8.73	N104°48'27" E	18.50
C14	18.47	20.00	147.2107	8.73	S104°48'27" W	18.50
C15	18.47	20.00	147.2107	8.73	N104°48'27" E	18.50
C16	33.07	20.00	84.3818	21.67	N82°32'44" W	28.33
C17	33.07	20.00	84.3818	21.67	S82°32'44" E	28.33
C18	33.07	20.00	84.3818	21.67	N82°32'44" W	28.33
C19	33.07	20.00	84.3818	21.67	S82°32'44" E	28.33
C20	18.47	20.00	147.2107	8.73	N104°48'27" W	18.50
C21	18.47	20.00	147.2107	8.73	S104°48'27" E	18.50
C22	18.47	20.00	147.2107	8.73	N104°48'27" W	18.50
C23	18.47	20.00	147.2107	8.73	S104°48'27" E	18.50
C24	18.11	175.00	105.6230	8.06	S84°39'41" E	18.10
C25	18.11	175.00	105.6230	8.06	N84°39'41" W	18.10
C26	23.52	225.00	132.9227	11.77	S84°39'41" E	23.51
C27	23.52	225.00	132.9227	11.77	N84°39'41" W	23.51
C28	23.52	225.00	132.9227	11.77	S84°39'41" E	23.51
C29	23.52	225.00	132.9227	11.77	N84°39'41" W	23.51
C30	23.52	225.00	132.9227	11.77	S84°39'41" E	23.51
C31	23.52	225.00	132.9227	11.77	N84°39'41" W	23.51
C32	23.52	225.00	132.9227	11.77	S84°39'41" E	23.51
C33	23.52	225.00	132.9227	11.77	N84°39'41" W	23.51
C34	23.52	225.00	132.9227	11.77	S84°39'41" E	23.51
C35	23.52	225.00	132.9227	11.77	N84°39'41" W	23.51
C36	23.52	225.00	132.9227	11.77	S84°39'41" E	23.51
C37	23.52	225.00	132.9227	11.77	N84°39'41" W	23.51
C38	23.52	225.00	132.9227	11.77	S84°39'41" E	23.51
C39	23.52	225.00	132.9227	11.77	N84°39'41" W	23.51
C40	23.52	225.00	132.9227	11.77	S84°39'41" E	23.51
C41	23.52	225.00	132.9227	11.77	N84°39'41" W	23.51
C42	23.52	225.00	132.9227	11.77	S84°39'41" E	23.51
C43	23.52	225.00	132.9227	11.77	N84°39'41" W	23.51
C44	23.52	225.00	132.9227	11.77	S84°39'41" E	23.51
C45	23.52	225.00	132.9227	11.77	N84°39'41" W	23.51
C46	23.52	225.00	132.9227	11.77	S84°39'41" E	23.51
C47	23.52	225.00	132.9227	11.77	N84°39'41" W	23.51
C48	23.52	225.00	132.9227	11.77	S84°39'41" E	23.51
C49	23.52	225.00	132.9227	11.77	N84°39'41" W	23.51
C50	23.52	225.00	132.9227	11.77	S84°39'41" E	23.51
C51	23.52	225.00	132.9227	11.77	N84°39'41" W	23.51
C52	23.52	225.00	132.9227	11.77	S84°39'41" E	23.51
C53	23.52	225.00	132.9227	11.77	N84°39'41" W	23.51
C54	23.52	225.00	132.9227	11.77	S84°39'41" E	23.51
C55	23.52	225.00	132.9227	11.77	N84°39'41" W	23.51
C56	23.52	225.00	132.9227	11.77	S84°39'41" E	23.51
C57	23.52	225.00	132.9227	11.77	N84°39'41" W	23.51
C58	23.52	225.00	132.9227	11.77	S84°39'41" E	23.51
C59	23.52	225.00	132.9227	11.77	N84°39'41" W	23.51
C60	23.52	225.00	132.9227	11.77	S84°39'41" E	23.51
C61	23.52	225.00	132.9227	11.77	N84°39'41" W	23.51
C62	23.52	225.00	132.9227	11.77	S84°39'41" E	23.51
C63	23.52	225.00	132.9227	11.77	N84°39'41" W	23.51
C64	23.52	225.00	132.9227	11.77	S84°39'41" E	23.51
C65	23.52	225.00	132.9227	11.77	N84°39'41" W	23.51
C66	23.52	225.00	132.9227	11.77	S84°39'41" E	23.51
C67	23.52	225.00	132.9227	11.77	N84°39'41" W	23.51
C68	23.52	225.00	132.9227	11.77	S84°39'41" E	23.51
C69	23.52	225.00	132.9227	11.77	N84°39'41" W	23.51
C70	23.52	225.00	132.9227	11.77	S84°39'41" E	23.51
C71	23.52	225.00	132.9227	11.77	N84°39'41" W	23.51
C72	23.52	225.00	132.9227	11.77	S84°39'41" E	23.51
C73	23.52	225.00	132.9227	11.77	N84°39'41" W	23.51
C74	23.52	225.00	132.9227	11.77	S84°39'41" E	23.51
C75	23.52	225.00	132.9227	11.77	N84°39'41" W	23.51
C76	23.52	225.00	132.9227	11.77	S84°39'41" E	23.51
C77	23.52	225.00	132.9227	11.77	N84°39'41" W	23.51
C78	23.52	225.00	132.9227	11.77	S84°39'41" E	23.51
C79	23.52	225.00	132.9227	11.77	N84°39'41" W	23.51
C80	23.52	225.00	132.9227	11.77	S84°39'41" E	23.51
C81	23.52	225.00	132.9227	11.77	N84°39'41" W	23.51
C82	23.52	225.00	132.9227	11.77	S84°39'41" E	23.51
C83	23.52	225.00	132.9227	11.77	N84°39'41" W	23.51
C84	23.52	225.00	132.9227	11.77	S84°39'41" E	23.51
C85	23.52	225.00	132.9227	11.77	N84°39'41" W	23.51
C86	23.52	225.00	132.9227	11.77	S84°39'41" E	23.51
C87	23.52	225.00	132.9227	11.77	N84°39'41" W	23.51
C88	23.52	225.00	132.9227	11.77	S84°39'41" E	23.51
C89	23.52	225.00	132.9227	11.77	N84°39'41" W	23.51
C90	23.52	225.00	132.9227	11.77	S84°39'41" E	23.51
C91	23.52	225.00	132.9227	11.77	N84°39'41" W	23.51
C92	23.52	225.00	132.9227	11.77	S84°39'41" E	23.51
C93	23.52	225.00	132.9227	11.77	N84°39'41" W	23.51
C94	23.52	225.00	132.9227	11.77	S84°39'41" E	23.51
C95	23.52	225.00	132.9227	11.77	N84°39'41" W	23.51
C96	23.52	225.00	132.9227	11.77	S84°39'41" E	23.51
C97	23.52	225.00	132.9227	11.77	N84°39'41" W	23.51
C98	23.52	225.00	132.9227	11.77	S84°39'41" E	23.51
C99	23.52	225.00	132.9227	11.77	N84°39'41" W	23.51
C100	23.52	225.00	132.9227	11.77	S84°39'41" E	