

LOT 4 TO BE A RESERVED AS FUTURE RIGHT-OF-WAY FOR THE EAGLE TOP PROPERTY, FOR A PERIOD OF THE STARTING DATE AND ENDING DATE, UNLESS THE RIGHT-OF-WAY IS NOT USED IN THIS PERIOD OF TIME, THE RIGHT-OF-WAY IS HEREBY WAIVED AND THE LAND REVERTS BACK TO AN APPROVED BUILDING LOT.

SURVEYOR'S CERTIFICATE
 I, David V. Thomas, DO HEREBY CERTIFY THAT I AM A REGISTERED LAND SURVEYOR, AND THAT I HOLD CERTIFICATE NO. 163297 AS PRESCRIBED UNDER THE LAWS OF THE STATE OF UTAH. I FURTHER CERTIFY BY AUTHORITY OF THE OWNERS, I HAVE MADE A SURVEY OF THE TRACT OF LAND SHOWN ON THIS PLAN AND DESCRIBED BELOW, AND HAVE SUBDIVIDED SAID TRACT OF LAND INTO LOTS, OPEN SPACE, STREETS AND EASEMENTS AND THE SAME HAS BEEN CORRECTLY SURVEYED AND STAKED ON THE GROUND AS SHOWN ON THIS PLAN AND THAT THIS PLAN IS TRUE AND CORRECT.
 DATE SEPT. 29, 2002
 SURVEYOR (SEE SEAL BELOW)

BOUNDARY DESCRIPTION
 BEGINNING AT A POINT WHICH IS 410.13 FEET N 00°37'03" E ALONG THE SECTION LINE FROM THE SOUTHEAST CORNER OF SECTION 29, TOWNSHIP 5 SOUTH, RANGE 1 WEST, SALT LAKE BASE AND MERIDIAN;
 THENCE N 00°37'03" E ALONG SAID SECTION LINE 912.28 FEET; THENCE N 89°23'00" W 1316.97 FEET; THENCE S 00°37'00" W 173.60 FEET; THENCE S 51°34'43" W 70.00 FEET; THENCE S 38°25'17" E 130.76 FEET TO THE POINT OF CURVATURE OF A 310.00 FOOT RADIUS CURVE TO THE LEFT; THENCE SOUTHEASTERLY ALONG THE ARC OF SAID CURVE 153.32 FEET THROUGH AN ANGLE OF 28°20'16"; THENCE S 00°37'00" W 82.09 FEET; THENCE S 89°23'00" E 125.00 FEET; THENCE S 00°37'00" W 1.59 FEET; THENCE S 89°23'00" E 146.00 FEET; THENCE S 00°37'00" W 50.00 FEET; THENCE S 50°17'34" E 51.78 FEET TO THE BEGINNING OF A 50.00 FOOT RADIUS CURVE TO THE RIGHT, THE TANGENT OF WHICH BEARS N 39°42'26" E; THENCE NORTHEASTERLY ALONG THE ARC OF SAID CURVE 44.43 FEET THROUGH AN ANGLE OF 50°54'34" TO THE POINT OF TANGENCY; THENCE S 89°23'00" E 30.00 FEET TO THE POINT OF CURVATURE OF A 15.00 FOOT RADIUS CURVE TO THE RIGHT; THENCE SOUTHEASTERLY ALONG THE ARC OF SAID CURVE 23.56 FEET THROUGH AN ANGLE OF 90°00'00" TO THE POINT OF TANGENCY; THENCE S 00°37'00" W 105.44 FEET TO THE POINT OF CURVATURE OF A 330.00 FOOT RADIUS CURVE TO THE LEFT; THENCE SOUTHERLY ALONG THE ARC OF SAID CURVE 113.23 FEET THROUGH AN ANGLE OF 19°39'32" TO THE POINT OF TANGENCY; THENCE S 19°02'32" E 95.77 FEET TO THE POINT OF CURVATURE OF A 270.00 FOOT RADIUS CURVE TO THE RIGHT; THENCE SOUTHERLY ALONG THE ARC OF SAID CURVE 84.65 FEET THROUGH AN ANGLE OF 17°57'44"; THENCE S 89°23'20" E 262.61 FEET TO THE POINT OF CURVATURE OF A 325.00 FOOT RADIUS CURVE TO THE LEFT; THENCE EASTERLY ALONG THE ARC OF SAID CURVE 38.29 FEET THROUGH AN ANGLE OF 06°44'58" TO THE POINT OF TANGENCY; THENCE N 83°51'42" E 407.39 FEET TO THE POINT OF BEGINNING.
 CONTAINING 22.58 ACRES.
 BASIS OF BEARING IS THE NAD27 UTAH STATE PLANE COORDINATE SYSTEM, CENTRAL ZONE.

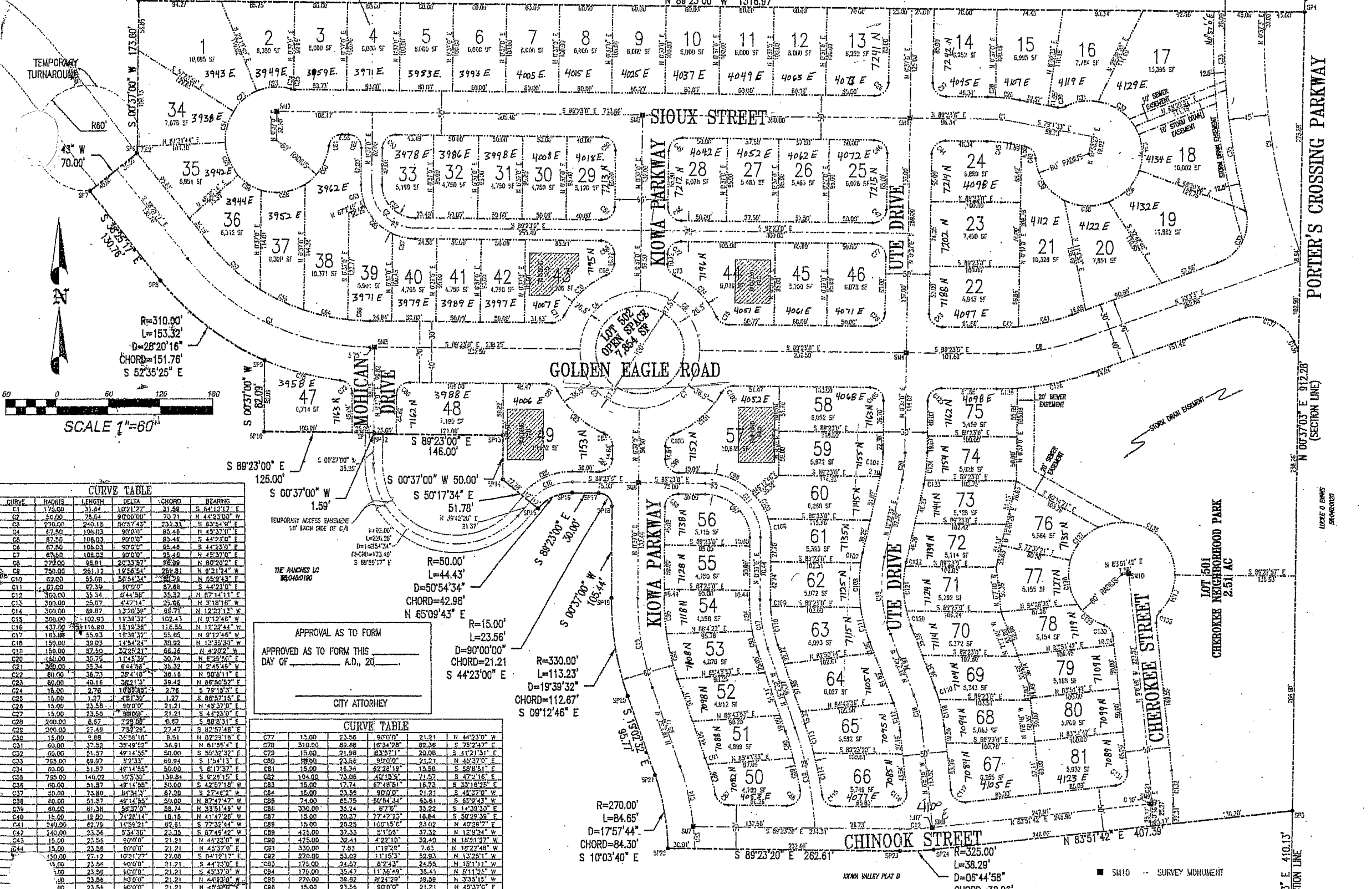
OWNER'S DEDICATION
 WE, THE UNDERSIGNED OWNERS OF ALL THE REAL PROPERTY DEPICTED ON THIS PLAN AND DESCRIBED IN THE SURVEYOR'S CERTIFICATE ON THIS PLAN, HAVE CAUSED THE LAND DESCRIBED ON THE PLAN TO BE DIVIDED INTO LOTS, STREETS, OPEN SPACE, EASEMENTS AND OTHER PUBLIC USES AS DESIGNATED ON THIS PLAN AND NOW DO HEREBY DEDICATE UNDER THE PROVISIONS OF 10-9-807 UTAH CODE, WITHOUT CONDITION, RESTRICTION OR RESERVATION TO THE CITY OF EAGLE MOUNTAIN, UTAH, ALL STREETS, WATER, SEWER AND OTHER UTILITY IMPROVEMENTS, OPEN SPACES SHOWN AS PUBLIC OPEN SPACES, PARKS, EASEMENTS AND ALL OTHER PLACES OF PUBLIC IMPROVEMENTS REQUIRED BY THE DEVELOPMENT AGREEMENT BETWEEN THE UNDERSIGNED AND THE CITY OF EAGLE MOUNTAIN FOR THE BENEFIT OF THE CITY AND THE INHABITANTS THEREOF.
 IN WITNESS WHEREOF WE HAVE HEREUNTO SET OUR HANDS THIS 29 DAY OF October, A.D. 2002 FOR RUSH VALLEY LC
Grant R. Gifford Grant R. Gifford
Scott Kierstead For The Ranches LC
2002

ACKNOWLEDGMENT
 STATE OF UTAH } S.S.
 COUNTY OF UTAH }
 ON THE 29 DAY OF October, A.D. 2002, PERSONALLY APPEARED BEFORE ME THE SIGNERS OF THE FOREGOING DEDICATION WHO DULY ACKNOWLEDGE TO ME THAT THEY DID EXECUTE THE SAME.
 MY COMMISSION EXPIRES 6-26-2006 Melanie Watkins
 NOTARY PUBLIC

ACCEPTANCE BY LEGISLATIVE BODY
 THE CITY COUNCIL OF EAGLE MOUNTAIN CITY, COUNTY OF UTAH, APPROVES THIS SUBDIVISION AND HEREBY ACCEPTS THE DEDICATION OF ALL STREETS AND EASEMENTS FOR THE PERPETUAL USE OF THE PUBLIC THIS 29 DAY OF October, A.D. 2002
John C. Burt
 WATER
 APPROVED Scott Kierstead ATTEST John C. Burt
 CITY ENGINEER (SEE SEAL BELOW) CLERK-RECORDER (SEE SEAL BELOW)

PLANNING COMMISSION APPROVAL
 APPROVED THIS 29 DAY OF October, A.D. 2002 BY THE EAGLE MOUNTAIN CITY PLANNING COMMISSION
 DIRECTOR - SECRETARY John C. Burt CO-CHAIRMAN, PLANNING COMMISSION John C. Burt

PLAT A
KIOWA VALLEY
 SUBDIVISION, EAGLE MOUNTAIN CITY, UTAH COUNTY, STATE OF UTAH
 LOCATED IN THE S.E. 1/4 OF SECTION 29, T.5S., R.1W., S.L.B.&M.
 SCALE: 1" = 60'
 SURVEYOR'S SEAL: DAVID V. THOMAS, 163297
 NOTARY PUBLIC SEAL: MELANIE WATKINS, 10777 NORTH 4800 WEST, HIGHLAND, UT 84003, COMM. EXP. 6-26-2006
 CITY ENGINEER SEAL: SCOTT KIERSTEAD
 CLERK-RECORDER SEAL: JOHN C. BURT



CURVE TABLE

CURVE	RADIUS	LENGTH	DELTA	CHORD	BEARING
C1	175.00	31.84	102°12'27"	31.84	S 34°13'17" E
C2	50.00	26.54	90°00'00"	26.54	N 44°23'00" W
C3	270.00	240.18	80°57'42"	73.23	S 63°34'58" E
C4	67.50	106.03	90°00'00"	67.50	N 45°37'00" E
C5	67.50	106.03	90°00'00"	67.50	S 44°23'00" E
C6	67.50	106.03	90°00'00"	67.50	S 44°23'00" E
C7	300.00	69.87	132°00'00"	69.87	N 12°23'13" E
C8	270.00	96.91	203°33'57"	86.29	N 90°20'28" E
C9	750.00	261.12	18°56'54"	258.81	N 8°21'24" W
C10	62.50	65.00	90°00'00"	62.50	N 65°24'43" E
C11	67.50	67.34	90°00'00"	67.34	S 44°23'00" E
C12	300.00	31.34	64°44'58"	31.32	N 67°14'11" E
C13	300.00	25.07	44°23'00"	25.06	N 31°18'16" E
C14	300.00	69.87	132°00'00"	69.87	N 12°23'13" E
C15	306.00	102.93	132°00'00"	102.43	N 12°24'46" W
C16	537.00	115.90	18°19'36"	116.55	N 1°22'44" W
C17	163.00	55.93	18°38'12"	56.66	N 0°12'46" W
C18	150.00	38.03	14°34'24"	38.52	N 1°35'30" E
C19	150.00	38.03	22°28'21"	38.29	N 4°20'27" E
C20	150.00	30.76	11°48'29"	30.74	N 8°28'20" E
C21	280.00	35.34	64°44'58"	35.32	N 62°51'11" E
C22	80.00	36.73	38°41'38"	36.16	N 90°81'11" E
C23	80.00	49.16	38°41'38"	39.42	N 85°80'52" E
C24	15.00	2.78	10°00'00"	2.78	S 78°15'15" E
C25	15.00	1.37	48°37'00"	1.27	S 88°37'15" E
C26	15.00	23.56	90°00'00"	21.21	N 45°37'00" E
C27	15.00	23.56	90°00'00"	21.21	N 45°37'00" E
C28	240.00	6.67	90°00'00"	6.67	S 88°37'15" E
C29	200.00	27.49	75°27'28"	27.47	S 82°57'48" E
C30	15.00	9.66	34°58'18"	9.51	N 07°29'18" E
C31	60.00	32.58	30°42'52"	36.91	N 61°55'44" E
C32	60.00	21.57	48°14'36"	50.00	S 59°32'32" E
C33	75.00	69.97	37°33'	69.94	S 1°34'13" E
C34	75.00	31.87	48°14'36"	60.00	S 0°17'34" E
C35	75.00	149.07	10°33'30"	139.84	S 0°17'34" E
C36	80.00	31.87	48°14'36"	50.00	S 42°57'18" W
C37	80.00	75.80	84°34'34"	87.30	S 27°46'24" W
C38	80.00	61.37	48°14'36"	50.00	N 87°47'47" W
C39	80.00	81.30	55°37'00"	58.74	N 83°51'48" W
C40	15.00	18.92	71°28'14"	18.15	N 61°47'28" W
C41	240.00	62.78	11°32'11"	62.31	S 77°32'44" W
C42	240.00	62.78	57°34'30"	39.28	S 87°44'47" W
C43	15.00	23.56	90°00'00"	21.21	N 44°23'00" E
C44	15.00	23.56	90°00'00"	21.21	N 44°23'00" E
C45	15.00	23.56	90°00'00"	21.21	N 44°23'00" E
C46	15.00	23.56	90°00'00"	21.21	N 44°23'00" E
C47	15.00	23.56	90°00'00"	21.21	N 44°23'00" E
C48	15.00	23.56	90°00'00"	21.21	N 44°23'00" E
C49	15.00	23.56	90°00'00"	21.21	N 44°23'00" E
C50	15.00	23.56	90°00'00"	21.21	N 44°23'00" E
C51	15.00	23.56	90°00'00"	21.21	N 44°23'00" E
C52	15.00	23.56	90°00'00"	21.21	N 44°23'00" E
C53	15.00	23.56	90°00'00"	21.21	N 44°23'00" E
C54	15.00	23.56	90°00'00"	21.21	N 44°23'00" E
C55	15.00	23.56	90°00'00"	21.21	N 44°23'00" E
C56	15.00	23.56	90°00'00"	21.21	N 44°23'00" E
C57	15.00	23.56	90°00'00"	21.21	N 44°23'00" E
C58	15.00	23.56	90°00'00"	21.21	N 44°23'00" E
C59	15.00	23.56	90°00'00"	21.21	N 44°23'00" E
C60	15.00	23.56	90°00'00"	21.21	N 44°23'00" E
C61	15.00	23.56	90°00'00"	21.21	N 44°23'00" E
C62	15.00	23.56	90°00'00"	21.21	N 44°23'00" E
C63	15.00	23.56	90°00'00"	21.21	N 44°23'00" E
C64	15.00	23.56	90°00'00"	21.21	N 44°23'00" E
C65	15.00	23.56	90°00'00"	21.21	N 44°23'00" E
C66	15.00	23.56	90°00'00"	21.21	N 44°23'00" E
C67	15.00	23.56	90°00'00"	21.21	N 44°23'00" E
C68	15.00	23.56	90°00'00"	21.21	N 44°23'00" E
C69	15.00	23.56	90°00'00"	21.21	N 44°23'00" E
C70	15.00	23.56	90°00'00"	21.21	N 44°23'00" E
C71	15.00	23.56	90°00'00"	21.21	N 44°23'00" E
C72	15.00	23.56	90°00'00"	21.21	N 44°23'00" E
C73	15.00	23.56	90°00'00"	21.21	N 44°23'00" E
C74	15.00	23.56	90°00'00"	21.21	N 44°23'00" E
C75	15.00	23.56	90°00'00"	21.21	N 44°23'00" E
C76	15.00	23.56	90°00'00"	21.21	N 44°23'00" E
C77	15.00	23.56	90°00'00"	21.21	N 44°23'00" E
C78	15.00	23.56	90°00'00"	21.21	N 44°23'00" E
C79	15.00	23.56	90°00'00"	21.21	N 44°23'00" E
C80	15.00	23.56	90°00'00"	21.21	N 44°23'00" E
C81	15.00	23.56	90°00'00"	21.21	N 44°23'00" E
C82	15.00	23.56	90°00'00"	21.21	N 44°23'00" E
C83	15.00	23.56	90°00'00"	21.21	N 44°23'00" E
C84	15.00	23.56	90°00'00"	21.21	N 44°23'00" E
C85	15.00	23.56	90°00'00"	21.21	N 44°23'00" E
C86	15.00	23.56	90°00'00"	21.21	N 44°23'00" E
C87	15.00	23.56	90°00'00"	21.21	N 44°23'00" E
C88	15.00	23.56	90°00'00"	21.21	N 44°23'00" E
C89	15.00	23.56	90°00'00"	21.21	N 44°23'00" E
C90	15.00	23.56	90°00'00"	21.21	N 44°23'00" E
C91	15.00	23.56	90°00'00"	21.21	N 44°23'00" E
C92	15.00	23.56	90°00'00"	21.21	N 44°23'00" E
C93	15.00	23.56	90°00'00"	21.21	N 44°23'00" E
C94	15.00	23.56	90°00'00"	21.21	N 44°23'00" E
C95	15.00	23.56	90°00'00"	21.21	N 44°23'00" E
C96	15.00	23.56	90°00'00"	21.21	N 44°23'00" E
C97	15.00	23.56	90°00'00"	21.21	N 44°23'00" E
C98	15.00	23.56	90°00'00"	21.21	N 44°23'00" E
C99	15.00	23.56	90°00'00"	21.21	N 44°23'00" E
C100	15.00	23.56	90°00'00"	21.21	N 44°23'00" E

APPROVAL AS TO FORM
 APPROVED AS TO FORM THIS
 DAY OF _____ A.D., 20____
 CITY ATTORNEY

CURVE TABLE

CURVE	RADIUS	LENGTH	DELTA	CHORD	BEARING
C77	15.00	23.56	90°00'00"	21.21	N 44°23'00" W
C78	310.00	69.68	10°34'28"	69.36	S 78°24'27" E
C79	15.00	21.99	83°27'11"	20.06	S 47°21'31" E
C80	189.00	23.56	90°00'00"	21.21	N 45°37'00" E
C81	15.00	18.36	89°28'19"	17.60	S 82°51'11" E
C82	104.00	73.08	48°18'32"	71.57	S 47°16'16" E
C83	15.00	17.74	67°48'51"	16.73	S 37°18'23" E
C84	15.00	23.56	90°00'00"	21.21	S 48°37'00" E
C85	71.00	65.75	88°34'34"	65.81	S 82°43'37" E
C86	330.00	34.24	87°6'	33.32	S 12°32'30" E
C87	15.00	20.57	77°17'33"	19.84	S 50°28'38" E
C88	15.00	20.57	102°15'27"	23.02	N 42°51'11" E
C89	475.00	32.33	21°10'	32.32	N 12°42'24" E
C90	425.00	32.41	4°22'10"	32.40	N 16°51'27" W
C91	330.00	7.93	1°19'28"	7.93	N 18°23'48" W
C92	270.00	53.62	11°15'33"	53.93	N 13°25'11" W
C93	175.00	24.57	0°24'3"	24.56	N 19°11'17" W
C94	175.00	35.47	11°36'24"	35.41	N 5°19'25" W
C95	270.00	39.23	31°10'	39.30	N 33°11'27" W
C96	15.00	23.56	90°00'00"	21.21	N 48°37'00" E
C97	50.00	78.34	88°00'	76.71	S 44°23'00" E
C98	24.00	62.78	18°35'46"	60.00	N 85°27'7" E
C99	15.00	23.56	90°00'00"	21.21	N 44°23'00" E
C100	15.00	17.74	67°48'51"	16.73	N 34°30'25" E
C101	175.00	60.43	18°35'46"	60.00	N 42°51'11" E
C102	15.00	18.36	89°28'19"	17.60	N 52°22'51" E
C103	15.00	23.56	90°00'00"	21.21	S 44°23'00" E
C104	125.00	25.66	11°43'36"	25.61	S 6°28'50" W
C105	74.00	60.43	22°31'46"	50.00	S 20°51'21" W
C106	74.00	27.66	17°32'28"	27.57	S 8°11'4" W
C107	175.00	11.75	3°50'44"	11.74	S 16°27'12" W