



ENT 93083:2018 PG 1 of 16
JEFFERY SMITH
UTAH COUNTY RECORDER
2018 Sep 27 4:30 pm FEE 60.00 BY CS
RECORDED FOR EAGLE MOUNTAIN CITY

DEVELOPMENT AGREEMENT

EAGLE MOUNTAIN CITY

And

EAGLE MOUNTAIN PROPERTIES, LLC

For

HARMONY PRELIMINARY PLAT

This Development Agreement for the Harmony Preliminary Plat (this "Agreement") is entered into as of the 6th day of January, 2015, by and between Eagle Mountain City, Utah, a Utah Municipal Corporation (the "City") and Eagle Mountain Properties, LLC, a Utah limited liability company ("Developer").

This Agreement is made with reference to the following facts:

A. Developer has received conditional approval from the City Planning Commission for a new preliminary plat known as Harmony (the "Project"), which is attached as Exhibit "B."

B. The Project consists of approximately 772 acres of land (the "Property") located west of Pony Express Parkway, south and southwest of the existing Overland Trails Subdivision. A legal description of the Property is attached as Exhibit "A."

C. The Project is zoned as residential and commercial in accordance with the Eagle Mountain Properties Master Development Plan, and will be improved in compliance with procedures and standards in the Eagle Mountain 1997 Interim Development Code, as well as the Public Works Standards and Specifications, Building Codes, Fire Codes, etc. that are in effect at the time an application for final plat approval is submitted to the City, and the terms of this Development Agreement.

D. The parties wish to define the rights and responsibilities of the parties with respect to the development of the land and funding of improvements in the Harmony Preliminary Plat.

NOW, THEREFORE, in consideration of the mutual covenants and promises of the parties contained herein, the parties agree as follows:

1 Governing Standards. The Project shall be governed by the procedures, standards and requirements of the Eagle Mountain City 1997 Interim Development Code and the Public Works Standards and Specifications, Building Codes, Fire Codes, this Agreement, and the preliminary plat, etc. that are in effect at the time a substantially complete application for final plat approval is submitted to the City. All plats and site plan applications submitted after December 22, 2017 shall be governed by the preliminary plat and this Agreement, and the City

Code and standards and specifications at the time of submittal.

2 Zoning, Density and Land Use Standards. The Project is zoned as residential and commercial in accordance with the Eagle Mountain Properties Master Development Plan, and the uses for the Project are regulated by the Eagle Mountain Properties Master Development Agreement.

2.1 Project Areas and Densities. The total Project calculations are as follows:

Total Land Area:	772.49 acres
Total Acreage in Single-Family Lots:	344.30 acres
Total Acres Alternative Design Blocks:	17.690 acres
Total Multi-Family Acreage:	92.186 acres
Total Acreage Commercial	26.806 acres
Total Acreage Church Sites (6 sites)	23.845 acres
Total Acreage Schools	28.88 acres
Total Open Space	40.64 acres
Total Improved Open Space	35.98 acres
Single-Family Lots	2,360 lots
Alternative Design Block Units (maximums)	182 units
Multi-Family Units (conceptual, not vested)	1,935 units
Total # of Units (conceptual, not vested)	4,477 units
Single-Family Density	4.23 lots/acre
Multi-Family Density (conceptual, not vested)	21 units/acre
Overall Density	5.8 units/acre

The Developer acknowledges that the Eagle Mountain Properties Master Development Agreement expires December 22, 2017. Despite that expiration, the Harmony project is vested with the Single-Family density, the street configuration, and the lot layouts. Any multi-family or commercial site plan or final plat application for this project submitted after that date shall comply with the current City Code at the time of submittal. The City makes no guarantee or warranty that the maximum multi-family densities can be achieved and the parties acknowledge that as development progresses certain market, infrastructure, and/or other similar constraints beyond the control of the parties may be presented which could prevent the practical use of all vested densities. Future City Codes shall not apply to the single-family areas unless the Council, on the record, finds that a compelling, countervailing public interest would be jeopardized without applying such ordinance, amendment or standard to the Property.

3 Church Sites. The Project includes six church sites located throughout the development. In the event the church sites are not purchased, and remain undeveloped, the owner may elect to re-plat these blocks to a density of up to 3.86 dwelling units per acre. Half-width of the surrounding public streets may be included in the density calculations. No lot in any

re-platted church block shall have a width of less than fifty feet, and no multi-family product may be platted on the church blocks. No lot or street configurations are vested for these parcels.

4 Junior High School Site. The Junior High School block has been reserved for a future school. In the event the School District does not choose this block for another school, the school block may be platted to a maximum density of 3.86 dwelling units per acre. Half-width of the surrounding public streets may be included in the density calculations. No lot in this re-platted block shall have a width of less than fifty feet, and no multi-family product may be platted on the school blocks. No lot or street configurations are vested for these parcels.

5 Improved Open Spaces and Trails. The Project contains 40.64 acres of total open space, including parks, decorative open space areas, and 4.66 acres of land to be preserved for the historic Pony Express Trail corridor. The open space breakdown is as follows:

Improved Park Area (Acres)

A	1.49
B	0.31
C	1.90
D	0.27
E	3.13
F	0.86
G	1.06
H	1.62
I	1.79
J	4.23
K	3.70
L	13.84

Unimproved Open Space Area (Acres)

M	4.66
---	------

Improved Open Space Area (Acres)

N	0.23
O	0.20
P	0.20
Q	0.17
R	0.07
S	0.06
T	0.21
U	0.40
V	0.15

W

0.09

- 5.1 Improved Open Space. The Project currently contains the following open space areas: twelve (12) areas to be improved by Developer as parks for a total of 34.2 acres; and ten (10) open space areas to be improved by Developer with decorative landscaping, park benches, etc. for a total of 1.78 acres; and a 4.66-acre area to remain as unimproved open space, reserved for the future improvement of the historic Pony Express Trail corridor. These open space areas are to be designed in detail (including type and quality of amenities and improvements) according to the City Code in effect at the time a substantially complete application for final plat or site plan approval is submitted to the City. All parks which are used as open space should have drainage piped through the park so that the park becomes usable and nuisance water is allowed to flow through, and spill over when flows begin to exceed historical runoff. Also, a pad for pavilions, tot lots, and other amenities should be provided above the pond water mark to allow full use of these facilities without increasing the required maintenance. These will be designed with each phase of development.
- 5.2 Trails. An inter-connective trail system has been included between all of the parks and the schools in the Project. Trails are included along the major roadways, as required, and widened sidewalks are included along some neighborhood streets. There are a total of 10.30 miles of widened sidewalk and trails within this development. The “development” trails shall be built along with the infrastructure for each associated subdivision, according to the Harmony “typical road cross sections” approved with this preliminary plat, or the City’s current standards in effect at the time a substantially complete application for final plat or site plan approval is submitted to the City.
- 5.3 Linear Park. The linear park in the center of the project shall continue until it intersects with Many Bears Street on the north and Pole Canyon Boulevard on the south, to provide a linear park and trail connection through the project.

6 Park Completion / Timing. A park must be designated with each final plat for partial improvement along with required infrastructure for that plat at time of submittal. Parks must be improved at a rate of at least 2.5 acres/400 lots, or approximately 273 square feet per lot. For example, Plat A-1 includes 34 lots, so 9,282 square feet of park space plus amenities must be improved in a park within 1,320 feet of the plat as part of the infrastructure improvements for that plat. The location and type of improvements/amenities are to be approved as part of the final plat application. A fee-in-lieu of improved open space may be approved at the discretion of the approval authority along with each final plat application.

- 7 Alternative Block Designs. Blocks A through D (to be added to the Preliminary

Plat) are to be platted and designed as either single-family detached cluster home, patio home, or garden court developments, as defined in the Eagle Mountain Municipal Code Section 17.10.030, or other similar product as approved by the Planning Commission and City Council. The homes/lots fronting onto a green court may have a minimum frontage of 35 feet, and the homes/lots fronting a public street may have a minimum frontage of 40 feet, with no garages facing the public street. The fronts of homes shall face the public street or the green court. The final design will be approved at the Final Plat and Site Plan stage. The City makes no guarantee that the density maximum shown on the preliminary plat for these areas can be achieved.

8 Lot Layout / Lot Size Variation. There shall be a variety of lot sizes throughout the Harmony plat, with no single street having more than four lots in a row that are less than 52 feet wide; or, in other words, for every four lots in a row, that are less than 52 feet, the next lot shall be at least 52 feet wide. No more than three homes of the same elevation or color shall be located along a single row of homes.

9 Driveways. Residential driveways shall be a minimum of 22 feet in length from the property line.

10 Multi-Family Review. All multi-family or commercial site plans or plat applications for this project shall comply with the Eagle Mountain City 1997 Interim Development Code if submitted before the expiration of the Eagle Mountain Properties Master Development Agreement (October 7, 2017). All multi-family and commercial applications submitted after the expiration date shall comply with the then current City Code at the time of submittal to the City of a complete application including all require application fees. The multi-family areas are not vested with density, and any reference to the number of units on the Preliminary Plat is conceptual and informational only. The multi-family areas must be designed with density and product transitions between the single family lots and the high density or commercial areas. Appropriate density and product transitioning will be determined at the time of site plan applications.

11 Corner Lots. All corner lots shall contain a "corner cutoff" setback to allow for proper distance for gas and electric utilities to round the corners of a lot while still keeping the required distance from a building foundation. This includes taking a triangle out of the potential building pad measuring five feet each direction at the corner of the setbacks.

12 Phasing of Construction. Phasing shall generally follow the phasing included in the Harmony Project Overall Phase Index, but the City understands that variations to this phasing for various reasons will occur. Every phase shall include approved emergency vehicle access and turnaround, and no more than fifteen (15) lots may be built on a dead-end street or cul-de-sac.

13 Traffic Studies / Road Failures. All roads within the development that are not

included in the City's Master Transportation Plan or Future Land Use and Transportation Corridors Plan must be paid for by the Developer. The City Engineer shall have the discretion to require traffic studies with each final plat application. If, according to developer's traffic study, the next plat would likely reduce the level of service to level of service D or worse as defined in the North American highway LOS standards Highway Capacity Manual (HCM) and AASHTO Geometric Design of Highways and Streets ("Green Book"), on Eagle Mountain Boulevard, Pony Express Parkway, or SR73, the developer would be required to fund the difference between the project cost and any impact fees previously collected by the City toward the required road project, under the terms of the Eagle Mountain Properties Master Development Agreement (2.6.7). In that event, an impact fee credit, if requested, will then be applied to the future development of the Project to effectively reimburse the owner/developer for this additional cost over time.

14 Utility Services and Infrastructure Improvements. Except as provided in a reimbursement agreement which may be entered between the City and the Developer, the Developer agrees to dedicate to the City all required easements, property, and rights of way necessary for the construction and location of City owned utilities, utility facilities, roads, and other public ways within the boundaries of Harmony at the time of final plat recordation. Any easements, property, and rights of way shall be conveyed to the City free and clear of any encumbrances.

15 Off-Site Utilities. Necessary off-site utility improvements must be completed to the satisfaction of the City Engineer and City Energy Director (or gas and electric companies) prior to issuance of any building permits in a phase that requires such off-site improvements.

16 Storm Drainage. Storm drain detention basins designed and built to the City's adopted specifications must be installed prior to issuance of any building permits for lots that would drain into such basin. Easements are required for all offsite storm drain infrastructure. Detention ponds that are designed to allow for a discharge may be designed as temporary retention ponds until the phasing allows for the completion of the offsite outfall storm drain, provided that an overflow storm drain can be provided. Drainage plans are required to be submitted along with each final plat for approval. Developer agrees to comply with drainage standards in the City Code at the time of final plat and/or building permit submittal.

17 Street Names. The street names provided with this Preliminary Plat are considered reserved, following any changes required by City Staff. The names shown on the preliminary plat for several streets will require name changes for addressing and safety purposes, as well as to avoid duplication or confusion. These include: Doris Parkway (changed to Pole Canyon Boulevard), Brittany Street, Oquirrh View, Gracie Way, and Natahki Street (to be changed to Shumate Street), and others. Street names will require review and approval by the City Staff prior to any final plat approvals.

18 Not-A-Part. The areas labeled "Not a Part" on the preliminary plat are not a part of the Project, and are not vested with any density, road configuration, or lot layout (this includes the future multi-family areas, the Kent & Deborah Sievers property, and the Mountain Trails Elementary School site).

19 Fencing. Six-foot high privacy fencing or a decorative wall is required to be installed by the developer for all rear lots along a collector or arterial road. This fencing shall be included in any improvement completion assurance (bond) with the City and shall be installed along with the infrastructure for the subdivision.

20 Architectural Standards. All homes on lots within the project shall have 'carriage' style, or decorative, garage doors. The front of all homes will have at least two textures, including rock, brick, stucco, or decorative material, similar to Hardy board. The texture shall wrap around the front of the home at least until the first windows along each side of the home. Typical vinyl siding will not be used on the front of the homes.

21 Home Owner's Association. The Harmony Development, including the commercial and multi-family areas, will be part of the Harmony Home Owner's Association (HOA). All of the parks and public spaces, identified as parcels 'A' through 'W' on the Harmony Preliminary Plat, will be dedicated to Eagle Mountain City with their respective final plats. All trail corridors and certain other spaces, 'M' through 'W', will be maintained by the HOA, which will have rights of access for that maintenance. All other parks and open space areas are to be maintained by Eagle Mountain City.

22 Expirations. Due to the magnitude of the Harmony Development, this Preliminary Plat Approval shall continue in full force and effect for 10 years after the date of the Harmony Development Agreement, which is the 6th day of January, 2015, and shall be automatically renewed for continuing periods of five (5) additional years on every five (5) year anniversary of the effective date of the Harmony Development Agreement. This automatic renewal and extension shall occur unless the City Council finds that a compelling, countervailing and substantial public harm will result from an automatic five year renewal prior to the date that the renewal would have otherwise occurred.

23 Developer's Remedies Upon Default. Developer acknowledges and agrees that Developer's sole and exclusive remedy under this Agreement shall be specific performance of the development rights granted in this Agreement and City's obligations under this Agreement. In no event shall city be liable to developer, its successors or assigns, for any indirect, special, punitive, incidental, or consequential damages, including, without limitation, lost profits, costs of delay, or liabilities to third parties for any breach or default under the terms of this Agreement and related to its duties under this Agreement. This provision shall not affect the respective rights and responsibilities of City or Developer under any other agreement or contract between them, or for any causes of action arising beyond the terms and provisions of this Agreement.



24 City's Remedies Upon Default. Upon default of any terms or conditions of this Agreement, City may require specific performances of Developer's obligations and City may withhold issuance of any building permits or further approvals with the Project until Developer has fully complied with the terms and conditions of this Agreement.

25 Binding Effect. This Agreement shall be binding upon and inure to the benefit of the successors, heirs and assigns of the parties hereto, and to any entities resulting from the reorganization, consolidation, or merger of any party hereto. This Agreement shall be recorded against the Property and shall be deemed to run with the land and shall be binding on Developer and all successors and assigns of any of the foregoing.

26 Integration. This Agreement supersedes any previous agreement, representation, or understanding between the parties relating to the subject matter hereof; provided however, that the Development Code of the City shall govern the procedures and standards for approval of each subdivision and public improvement.

27 Not Severable. The provisions of this Agreement are not severable, and should any provision hereof be deemed by a court of competent jurisdiction to be void, unenforceable or invalid, such provision shall affect the remainder of this Agreement, and shall provide grounds for dissolution or amendment of the Agreement at the option of the parties in the exclusive discretion of each of them.

28 Waiver. Any waiver by any party hereto of any breach of any kind or character what so ever by the other party, whether such waiver be direct or implied, shall not be construed as a continuing waiver of or consent to any subsequent breach of this Agreement on the part of the other party.

29 No Modification. This Agreement may not be modified except by an instrument in writing signed by the parties hereto.

30 Governing Law. This Agreement is entered into in Utah County in the State of Utah and shall be construed in accordance with the laws of the State of Utah.



Dated this 6 day of January, 2015.

EAGLE MOUNTAIN PROPERTIES, LLC



John Walden Managing Member

Dated this 7 day of January, 2015.

ATTEST:

EAGLE MOUNTAIN CITY



Fionnuala Kofoed, City Recorder



Christopher Pengra, Mayor



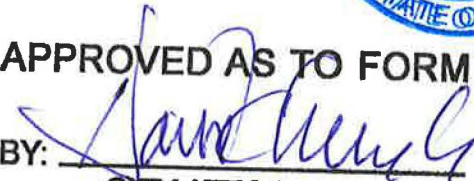
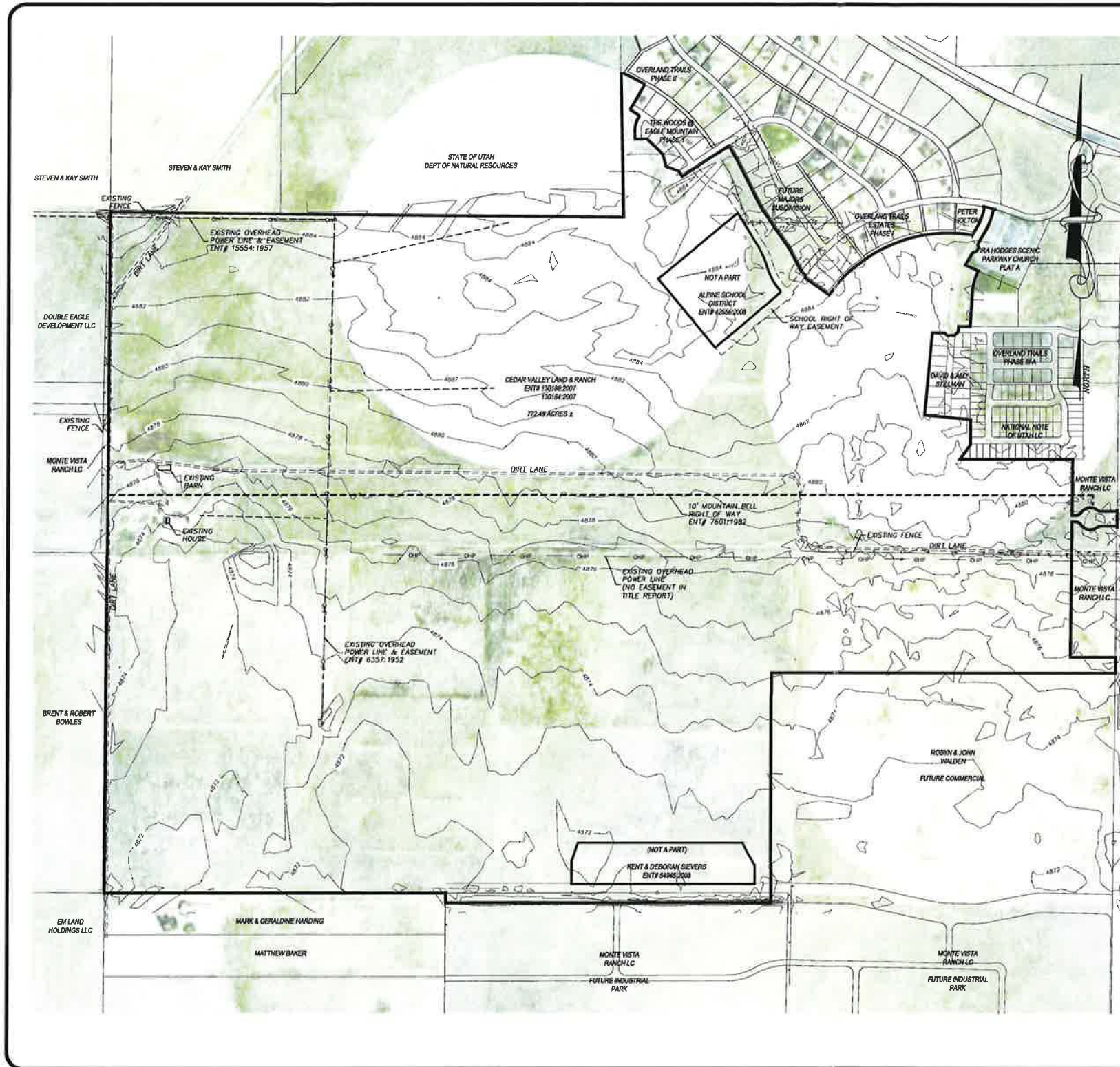
APPROVED AS TO FORM

BY: _____
CITY ATTORNEY



Exhibit A

[Legal Description & Existing Site Plan]





LEGAL DESCRIPTION

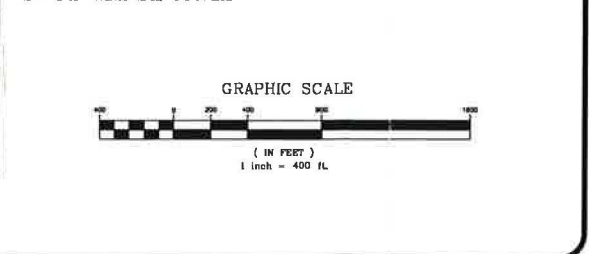
A PARCEL OF LAND LOCATED IN THE SOUTHWEST 1/4 OF SECTION 11, THE WEST 1/2 OF SECTION 13, SECTION 14 AND THE NORTHEAST 1/4 OF SECTION 23, TOWNSHIP 6 SOUTH, RANGE 2 WEST, SALT LAKE BASE AND MERIDIAN, IN THE CITY OF EARLE MOUNTAIN, UTAH COUNTY, UTAH, MORE PARTICULARLY DESCRIBED AS FOLLOWS:

BEGINNING AT THE NORTHWEST CORNER OF SECTION 14, TOWNSHIP 6 SOUTH, RANGE 2 WEST, SALT LAKE BASE AND MERIDIAN; THENCE S89°24'E 268.83 FEET TO THE NORTH 1/4 CORNER OF SAID SECTION 14; THENCE S89°24'E 134.31 FEET TO THE 1/16 CORNER; THENCE N01°08'18"W 1128.47 FEET TO A POINT ON THE SOUTHERLY BOUNDARY OF OVERLAND TRAILS SUBDIVISION PHASE 2; THENCE N88°50'42"E 18.11 FEET TO THE BEGINNING OF A NON-TANGENT CURVE TO THE RIGHT, HAVING A RADIUS OF 1625.00 FEET; THENCE SOUTHWESTERLY ALONG THE ARC OF SAID CURVE 191.26 FEET; THROUGH A CENTRAL ANGLE OF 8°44'37"; CHORD OF SAID CURVE BEARS S83°02'40"E 161.15 FEET TO THE WESTERLY BOUNDARY OF THE WOODS @ EARLE MOUNTAIN PHASE 1; THENCE ALONG SAID SUBDIVISION BOUNDARY S30°18'41"W 230.01 FEET TO THE BEGINNING OF A NON-TANGENT CURVE TO THE RIGHT, HAVING A RADIUS OF 1308.00 FEET; THENCE SOUTHWESTERLY ALONG THE ARC OF SAID CURVE 78.18 FEET; THROUGH A CENTRAL ANGLE OF 37°47'41"; CHORD OF SAID CURVE BEARS S08°28'28"E 83.17 FEET TO THE BEGINNING OF A COMPOUND CURVE TO THE RIGHT, HAVING A RADIUS OF 15.00 FEET; THENCE SOUTHERLY ALONG THE ARC OF SAID CURVE 23.25 FEET; THROUGH A CENTRAL ANGLE OF 90°42'44"; CHORD OF SAID CURVE BEARS S11°13'02"E 21.34 FEET TO THE BEGINNING OF A REVERSE CURVE TO THE LEFT, HAVING A RADIUS OF 178.00 FEET; THENCE SOUTHWESTERLY ALONG THE ARC OF SAID CURVE 107.83 FEET; THROUGH A CENTRAL ANGLE OF 35°18'38"; CHORD OF SAID CURVE BEARS S15°50'02"W 108.18 FEET; THENCE S01°04'21"E 88.59 FEET; THENCE N89°50'39"E 83.23 FEET; THENCE S47°13'52"E 87.54 FEET; THENCE S43°27'39"E 87.54 FEET; THENCE S14°09'29"E 85.38 FEET; THENCE S88°50'04"E 104.99 FEET; THENCE S34°20'04"E 36.00 FEET; THENCE N58°17'56"E 274.40 FEET; THENCE N59°31'39"E 71.02 FEET; THENCE N54°17'56"E 92.26 FEET TO THE WESTERLY BOUNDARY OF THE PROPOSED MAJORS SUBDIVISION; THENCE ALONG SAID BOUNDARY S29°41'24"E 121.15 FEET; THENCE S27°37'08"E 418.76 FEET; THENCE S34°17'54"E 392.18 FEET; THENCE S27°37'08"E 203.94 FEET; THENCE S49°31'22"E 50.21 FEET TO THE BEGINNING OF A NON-TANGENT CURVE TO THE LEFT, HAVING A RADIUS OF 1385.00 FEET; THENCE SOUTHWESTERLY ALONG THE ARC OF SAID CURVE 20.00 FEET; THROUGH A CENTRAL ANGLE OF 0°04'39"; CHORD OF SAID CURVE BEARS S23°43'08"W 20.00 FEET; THENCE S54°14'E 255.00 FEET; THENCE N55°23'52"E 18.81 FEET; THENCE N48°32'02"E 91.74 FEET; THENCE N43°34'30"E 90.95 FEET; THENCE N47°36'57"E 90.95 FEET; THENCE N58°55'52"E 91.74 FEET; THENCE N54°59'51"E 18.81 FEET TO THE SOUTHERLY LINE OF OVERLAND TRAILS ESTATES PHASE 1 AND THE BEGINNING OF A NON-TANGENT CURVE TO THE RIGHT, HAVING A RADIUS OF 4352.00 FEET; CHORD OF SAID CURVE BEARS N77°20'16"E 858.12 FEET; THENCE N47°02'27"E 78.89 FEET TO THE BEGINNING OF A TANGENT CURVE TO THE LEFT, HAVING A RADIUS OF 478.00 FEET; THENCE NORTHEASTERLY ALONG THE ARC OF SAID CURVE 143.08 FEET; THROUGH A CENTRAL ANGLE OF 17°20'18"; CHORD OF SAID CURVE BEARS N25°25'25"E 144.52 FEET TO THE BEGINNING OF A NON-TANGENT CURVE TO THE LEFT, HAVING A RADIUS OF 21.00 FEET; THENCE NORTHEASTERLY ALONG THE ARC OF SAID CURVE 37.34 FEET; THROUGH A CENTRAL ANGLE OF 101°52'00"; CHORD OF SAID CURVE BEARS N42°28'08"W 38.61 FEET; THENCE N76°52'01"W 11.02 FEET TO THE BEGINNING OF A NON-TANGENT CURVE TO THE RIGHT, HAVING A RADIUS OF 1385.00 FEET; CHORD OF SAID CURVE BEARS S12°25'25"E 144.52 FEET TO THE BEGINNING OF A TANGENT CURVE TO THE LEFT, HAVING A RADIUS OF 21.00 FEET; THROUGH A CENTRAL ANGLE OF 4°42'28"; CHORD OF SAID CURVE BEARS S78°32'00"E 113.78 FEET TO THE WESTERLY BOUNDARY OF THE IRA HODGES BROWN PARKWAY CHURCH PLAT A; THENCE ALONG SAID SUBDIVISION BOUNDARY N78°32'01"W 184.14 FEET TO THE BEGINNING OF A NON-TANGENT CURVE TO THE LEFT, HAVING A RADIUS OF 30.00 FEET; THENCE SOUTHWESTERLY ALONG THE ARC OF SAID CURVE 30.78 FEET; THROUGH A CENTRAL ANGLE OF 88°07'01"; CHORD OF SAID CURVE BEARS S58°43'36"W 27.83 FEET; THENCE S12°39'58"W 81.13 FEET TO THE BEGINNING OF A TANGENT CURVE TO THE RIGHT, HAVING A RADIUS OF 341.00 FEET; THENCE SOUTHWESTERLY ALONG THE ARC OF SAID CURVE 167.08 FEET; THROUGH A CENTRAL ANGLE OF 17°20'18"; CHORD OF SAID CURVE BEARS S21°25'01"W 168.43 FEET; THENCE S30°10'51"W 104.18 FEET TO THE BEGINNING OF A TANGENT CURVE TO THE LEFT, HAVING A RADIUS OF 20.00 FEET; THENCE SOUTHWESTERLY ALONG THE ARC OF SAID CURVE 31.41 FEET; THROUGH A CENTRAL ANGLE OF 89°58'58"; CHORD OF SAID CURVE BEARS S79°10'33"W 28.28 FEET; THENCE S30°10'51"W 88.77 FEET; THENCE S20°04'00"W 18.07 FEET; THENCE S65°27'02"E 110.33 FEET; THENCE S23°27'29"W 84.28 FEET; THENCE S12°40'05"W 73.00 FEET; THENCE S03°50'20"W 73.00 FEET; THENCE S03°25'40"W 230.02 FEET TO THE NORTHERLY BOUNDARY OF OVERLAND TRAILS PHASE III-A; THENCE ALONG SAID SUBDIVISION BOUNDARY N89°59'25"W 86.12 FEET; THENCE S08°09'41"W 50.29 FEET TO THE NORTHERLY BOUNDARY OF THE DAVID & AMY STILLMAN PROPERTY; AND THE BEGINNING OF A NON-TANGENT CURVE TO THE LEFT, HAVING A RADIUS OF 20.00 FEET; THENCE SOUTHWESTERLY ALONG THE ARC OF SAID CURVE 30.31 FEET; THROUGH A CENTRAL ANGLE OF 88°31'00"; CHORD OF SAID CURVE BEARS S48°44'17"W 27.42 FEET; THENCE S08°09'32"W 22.31 FEET TO THE BEGINNING OF A NON-TANGENT CURVE TO THE LEFT, HAVING A RADIUS OF 20.00 FEET; THENCE NORTHWESTERLY ALONG THE ARC OF SAID CURVE 18.11 FEET; THROUGH A CENTRAL ANGLE OF 87°25'35"; CHORD OF SAID CURVE BEARS N43°16'36"W 28.12 FEET; THENCE N88°59'15"W 88.87 FEET; THENCE S05°06'41"W 84.10 FEET; THENCE S84°35'20"E 381.10 FEET TO THE NATIONAL NOTE OF UTAH LC PROPERTY; THENCE ALONG SAID BOUNDARY S00°00'00"W 197.24 FEET; THENCE S38°48'20"W 139.59 FEET; THENCE S88°59'24"E 881.16 FEET; THENCE S00°27'44"W 438.51 FEET; THENCE S89°59'24"E 26.92 FEET TO THE BEGINNING OF A TANGENT CURVE TO THE LEFT, HAVING A RADIUS OF 49.50 FEET; THENCE NORTHEASTERLY ALONG THE ARC OF SAID CURVE 48.72 FEET; THROUGH A CENTRAL ANGLE OF 56°23'40"; CHORD OF SAID CURVE BEARS N61°48'54"E 48.78 FEET TO THE BEGINNING OF A REVERSE CURVE TO THE RIGHT, HAVING A RADIUS OF 86.00 FEET; THENCE EASTERLY ALONG THE ARC OF SAID CURVE 141.44 FEET; THROUGH A CENTRAL ANGLE OF 84°14'04"; CHORD OF SAID CURVE BEARS N00°44'14"E 126.03 FEET TO THE BEGINNING OF A REVERSE CURVE TO THE LEFT; HAVING A RADIUS OF 86.00 FEET; THENCE SOUTHWESTERLY ALONG THE ARC OF SAID CURVE 32.59 FEET; THROUGH A CENTRAL ANGLE OF 37°50'38"; CHORD OF SAID CURVE BEARS S71°04'03"E 32.10 FEET; THENCE S89°59'24"E 105.52 FEET TO THE BEGINNING OF A TANGENT CURVE TO THE LEFT, HAVING A RADIUS OF 20.00 FEET; THENCE NORTHEASTERLY ALONG THE ARC OF SAID CURVE 31.26 FEET; THROUGH A CENTRAL ANGLE OF 89°32'52"; CHORD OF SAID CURVE BEARS N57°14'03"E 28.17 FEET TO THE WESTERLY LINE OF SWEETWATER ROAD; THENCE ALONG SAID RIGHT OF WAY S00°27'44"W 155.00 FEET TO THE BEGINNING OF A NON-TANGENT CURVE TO THE LEFT, HAVING A RADIUS OF 20.00 FEET; THENCE NORTHWESTERLY ALONG THE ARC OF SAID CURVE 31.26 FEET; THROUGH A CENTRAL ANGLE OF 80°28'11"; CHORD OF SAID CURVE BEARS N44°45'50"W 28.40 FEET; THENCE N89°59'24"W 28.28 FEET TO THE BEGINNING OF A TANGENT CURVE TO THE LEFT, HAVING A RADIUS OF 48.50 FEET; THENCE SOUTHWESTERLY ALONG THE ARC OF SAID CURVE 32.70 FEET; THROUGH A CENTRAL ANGLE OF 37°51'02"; CHORD OF SAID CURVE BEARS S71°05'05"W 32.11 FEET TO THE BEGINNING OF A REVERSE CURVE TO THE RIGHT, HAVING A RADIUS OF 86.00 FEET; THENCE WESTERLY ALONG THE ARC OF SAID CURVE 141.44 FEET; THROUGH A CENTRAL ANGLE OF 84°14'04"; CHORD OF SAID CURVE BEARS N00°43'05"W 126.04 FEET TO THE BEGINNING OF A REVERSE CURVE TO THE LEFT, HAVING A RADIUS OF 49.50 FEET; THENCE NORTHWESTERLY ALONG THE ARC OF SAID CURVE 48.72 FEET; THROUGH A CENTRAL ANGLE OF 56°23'40"; CHORD OF SAID CURVE BEARS N61°48'54"E 48.78 FEET; THENCE N89°59'24"W 28.32 FEET; THENCE S00°27'44"W 1081.48 FEET; THENCE S89°59'25"E 350.01 FEET TO THE WESTERLY LINE OF SWEETWATER ROAD; THENCE ALONG SAID RIGHT OF WAY S00°27'43"W 123.97 FEET; THENCE N89°59'23"W 268.57 FEET; THENCE S00°11'14"W 147.68 FEET; THENCE S04°00'52"W 50.12 FEET; THENCE S00°00'33"W 1277.87 FEET; THENCE S03°50'38"E 50.12 FEET; THENCE S00°00'33"W 274.38 FEET TO A POINT 72.00 FEET, MEASURED PERPENDICULARLY SOUTH OF THE SOUTHERLY LINE OF SECTION 14, TOWNSHIP 6 SOUTH, RANGE 2 WEST, SALT LAKE BASE AND MERIDIAN; THENCE S88°59'34"W 254.29 FEET PARALLEL TO SAID SECTION LINE; THENCE N00°22'01"E 77.00 FEET TO THE SOUTH 1/4 CORNER OF SAID SECTION 14; THENCE N89°58'54"W 208.96 FEET TO THE SOUTHWEST CORNER OF SAID SECTION 14; THENCE N02°31'46"E 281.84 FEET TO THE WEST 1/4 CORNER OF SAID SECTION 14; THENCE N00°23'01"E 268.46 FEET TO THE NORTHWEST CORNER OF SAID SECTION 14 AND POINT OF BEGINNING, CONTAINING 794.837 ACRES, MORE OR LESS.

LESS AND EXCEPTING THAT PORTION GRANTED TO AL HENT & DEBRA C. SEVERS IN SPECIAL WARRANTY DEED, ENTRY #112245, RECORDED OCTOBER 1, 2004, THEREIN DESCRIBED AS FOLLOWS:

BEGINNING AT A POINT WHICH IS N00°54'17"E 70.00 FEET (ALONG THE SECTION LINE) AND S89°59'09"W 262.71 FEET FROM THE SOUTHWEST CORNER OF SECTION 14, TOWNSHIP 6 SOUTH, RANGE 2 WEST, SALT LAKE BASE AND MERIDIAN; THENCE S32°16'15"E 313.02 FEET TO THE BEGINNING OF A TANGENT CURVE TO THE RIGHT HAVING A RADIUS OF 274.50 FEET; THENCE SOUTHWESTERLY ALONG THE ARC OF SAID CURVE 181.57 FEET THROUGH A CENTRAL ANGLE OF 18°06'49"; CHORD OF SAID CURVE BEARS S24°25'15"E 181.04 FEET TO THE BEGINNING OF A REVERSE CURVE TO THE LEFT HAVING A RADIUS OF 528.50 FEET; THENCE SOUTHWESTERLY ALONG THE ARC OF SAID CURVE 221.56 FEET THROUGH A CENTRAL ANGLE OF 24°29'23"; CHORD OF SAID CURVE BEARS S07°48'15"W 214.92 FEET TO THE BEGINNING OF A REVERSE CURVE TO THE RIGHT HAVING A RADIUS OF 15.00 FEET; THENCE SOUTHERLY ALONG THE ARC OF SAID CURVE 22.58 FEET THROUGH A CENTRAL ANGLE OF 86°14'10"; CHORD OF SAID CURVE BEARS S02°48'15"W 20.51 FEET TO THE BEGINNING OF A COMPOUND CURVE TO THE RIGHT HAVING A RADIUS OF 1383.00 FEET; THENCE SOUTHWESTERLY ALONG THE ARC OF SAID CURVE 103.02 FEET THROUGH A CENTRAL ANGLE OF 0°19'45"; CHORD OF SAID CURVE BEARS S48°25'13"W 103.00 FEET; THENCE S50°15'05"W 582.87 FEET; THENCE N38°44'53"W 700.00 FEET; THENCE N50°15'05"E 807.52 FEET TO THE POINT OF BEGINNING, CONTAINING 12.000 ACRES, MORE OR LESS.

NET ACREAGE = 772.493 ACRES, MORE OR LESS.



NO.	DATE	DESCRIPTION	BY

H&H
ENGINEERING AND SURVEYING, INC.
233 E MAIN ST., STE. A, AMERICAN FORK, UT 84003
TEL: (801) 756-2486 FAX: (801) 756-3499

HARMONY
EXISTING SITE PLAN

PROJECT NO. B-308-02
DATE 3/22/10
HOR SCALE 1"=400'
VER SCALE NA
ENGINEER VEH
DRAFTED THK
CHECKED VEH

SHEET **3**

LEGAL DESCRIPTION

A PARCEL OF LAND LOCATED IN THE SOUTHEAST 1/4 OF SECTION 11, THE WEST 1/2 OF SECTION 13, SECTION 14 AND THE NORTHEAST 1/4 OF SECTION 23, TOWNSHIP 6 SOUTH, RANGE 2 WEST, SALT LAKE BASE AND MERIDIAN, IN THE CITY OF EAGLE MOUNTAIN, UTAH COUNTY, UTAH, MORE PARTICULARLY DESCRIBED AS FOLLOWS:

BEGINNING AT THE NORTHWEST CORNER OF SECTION 14, TOWNSHIP 6 SOUTH, RANGE 2 WEST, SALT LAKE BASE AND MERIDIAN; THENCE S89°24'28"E 2669.83 FEET TO THE NORTH 1/4 CORNER OF SAID SECTION 14; THENCE S89°32'46"E 1334.31 FEET TO THE 1/16 CORNER; THENCE N01°09'18"W 1126.47 FEET TO A POINT ON THE SOUTHERLY BOUNDARY OF OVERLAND TRAILS SUBDIVISION PHASE 2; THENCE N88°50'42"E 16.11 FEET TO THE BEGINNING OF A NON-TANGENT CURVE TO THE RIGHT, HAVING A RADIUS OF 1625.00 FEET; THENCE SOUTHEASTERLY ALONG THE ARC OF SAID CURVE 191.26 FEET, THROUGH A CENTRAL ANGLE OF 6°44'37"; CHORD OF SAID CURVE BEARS S63°02'40"E 191.15 FEET TO THE WESTERLY BOUNDARY OF THE WOODS @ EAGLE MOUNTAIN PHASE 1; THENCE ALONG SAID SUBDIVISION BOUNDARY S307°41'W 230.01 FEET TO THE BEGINNING OF A NON-TANGENT CURVE TO THE RIGHT, HAVING A RADIUS OF 1395.00 FEET; THENCE SOUTHEASTERLY ALONG THE ARC OF SAID CURVE 76.18 FEET, THROUGH A CENTRAL ANGLE OF 3°07'43"; CHORD OF SAID CURVE BEARS S58°06'28"E 76.17 FEET TO THE BEGINNING OF A COMPOUND CURVE TO THE RIGHT, HAVING A RADIUS OF 15.00 FEET; THENCE SOUTHERLY ALONG THE ARC OF SAID CURVE 23.75 FEET, THROUGH A CENTRAL ANGLE OF 90°42'44"; CHORD OF SAID CURVE BEARS S11°11'36"E 21.34 FEET TO THE BEGINNING OF A REVERSE CURVE TO THE LEFT, HAVING A RADIUS OF 175.00 FEET; THENCE SOUTHWESTERLY ALONG THE ARC OF SAID CURVE 107.85 FEET, THROUGH A CENTRAL ANGLE OF 35°18'38"; CHORD OF SAID CURVE BEARS S16°30'02"W 106.15 FEET; THENCE S07°09'21"E 68.59 FEET; THENCE N88°50'39"E 93.23 FEET; THENCE S47°21'53"E 87.54 FEET; THENCE S43°27'39"E 87.54 FEET; THENCE S14°09'28"E 95.36 FEET; THENCE S69°55'04"E 104.99 FEET; THENCE S33°42'04"E 50.00 FEET; THENCE N56°17'56"E 274.40 FEET; THENCE N59°31'39"E 71.02 FEET; THENCE N56°17'56"E 92.26 FEET TO THE WESTERLY BOUNDARY OF THE PROPOSED MAJORS SUBDIVISION; THENCE ALONG SAID BOUNDARY S29°41'24"E 120.15 FEET; THENCE S27°37'08"E 419.76 FEET; THENCE S34°17'54"E 392.18 FEET; THENCE S27°39'41"E 203.94 FEET; THENCE S48°31'22"E 50.21 FEET TO THE BEGINNING OF A NON-TANGENT CURVE TO THE LEFT, HAVING A RADIUS OF 1385.00 FEET; THENCE SOUTHWESTERLY ALONG THE ARC OF SAID CURVE 20.00 FEET, THROUGH A CENTRAL ANGLE OF 0°49'39"; CHORD OF SAID CURVE BEARS S35°43'06"W 20.00 FEET; THENCE S54°11'43"E 235.00 FEET; THENCE N35°43'35"E 18.87 FEET; THENCE N38°33'02"E 91.74 FEET; THENCE N43°04'59"E 90.95 FEET; THENCE N47°38'57"E 90.95 FEET; THENCE N52°08'55"E 91.74 FEET; THENCE N54°59'51"E 19.01 FEET TO THE SOUTHERLY LINE OF OVERLAND TRAILS ESTATES PHASE 1 AND THE BEGINNING OF A NON-TANGENT CURVE TO THE RIGHT, HAVING A RADIUS OF 1150.00 FEET; THENCE NORTHEASTERLY ALONG THE ARC OF SAID CURVE 880.47 FEET, THROUGH A CENTRAL ANGLE OF 43°52'01"; CHORD OF SAID CURVE BEARS N77°20'16"E 859.12 FEET; THENCE N30°10'27"E 70.69 FEET TO THE BEGINNING OF A TANGENT CURVE TO THE LEFT, HAVING A RADIUS OF 475.00 FEET; THENCE NORTHEASTERLY ALONG THE ARC OF SAID CURVE 145.08 FEET, THROUGH A CENTRAL ANGLE OF 17°30'01"; CHORD OF SAID CURVE BEARS N21°25'25"E 144.52 FEET TO THE BEGINNING OF A NON-TANGENT CURVE TO THE LEFT, HAVING A RADIUS OF 21.00 FEET; THENCE NORTHWESTERLY ALONG THE ARC OF SAID CURVE 37.34 FEET, THROUGH A CENTRAL ANGLE OF 101°52'00"; CHORD OF SAID CURVE BEARS N24°26'09"W 32.61 FEET; THENCE N76°52'01"W 1.10 FEET TO THE BEGINNING OF A NON-TANGENT CURVE TO THE RIGHT, HAVING A RADIUS OF 1385.00 FEET; THENCE SOUTHEASTERLY ALONG THE ARC OF SAID CURVE 113.80 FEET, THROUGH A CENTRAL ANGLE OF 4°42'28"; CHORD OF SAID CURVE BEARS S76°52'00"E 113.76 FEET TO THE WESTERLY BOUNDARY OF THE IRA HODGES SCENIC PARKWAY CHURCH PLAT A; THENCE ALONG SAID SUBDIVISION BOUNDARY N76°52'01"W 1.64 FEET TO THE BEGINNING OF A NON-TANGENT CURVE TO THE LEFT, HAVING A RADIUS OF 20.00 FEET; THENCE SOUTHWESTERLY ALONG THE ARC OF SAID CURVE 30.76 FEET THROUGH A CENTRAL ANGLE OF 88°07'10"; CHORD OF SAID CURVE BEARS S56°43'36"W 27.82 FEET; THENCE S12°39'59"W 5.13 FEET TO THE BEGINNING OF A TANGENT CURVE TO THE RIGHT, HAVING A RADIUS OF 547.00 FEET; THENCE SOUTHWESTERLY ALONG THE ARC OF SAID CURVE 167.08 FEET, THROUGH A CENTRAL ANGLE OF 17°30'04"; CHORD OF SAID CURVE BEARS S21°25'01"W 166.43 FEET; THENCE S30°10'03"W 104.18 FEET TO THE BEGINNING OF A TANGENT CURVE TO THE LEFT, HAVING A RADIUS OF 20.00 FEET; THENCE SOUTHEASTERLY ALONG THE ARC OF SAID CURVE 31.41 FEET, THROUGH A CENTRAL ANGLE OF 89°58'58"; CHORD OF SAID CURVE BEARS S14°49'57"E 28.28 FEET; THENCE S30°10'03"W 50.00 FEET TO THE BEGINNING OF A NON-TANGENT CURVE TO THE LEFT, HAVING A RADIUS OF 20.00 FEET; THENCE SOUTHWESTERLY ALONG THE ARC OF SAID CURVE 31.41 FEET, THROUGH A CENTRAL ANGLE OF 89°58'58"; CHORD OF SAID CURVE BEARS S75°10'03"W 28.28 FEET; THENCE S30°10'03"W 88.77 FEET; THENCE S29°04'10"W 18.07 FEET; THENCE S65°52'10"E 110.32 FEET; THENCE S23°57'29"W 64.28 FEET; THENCE S12°40'05"W 75.00 FEET; THENCE S03°50'20"W 75.00 FEET; THENCE S03°25'40"W 230.02 FEET TO THE NORTHERLY BOUNDARY OF OVERLAND TRAILS PHASE III-A; THENCE ALONG SAID SUBDIVISION BOUNDARY N89°59'25"W 89.12 FEET; THENCE S06°09'41"W 50.29 FEET TO THE NORTHERLY BOUNDARY OF THE DAVID & AMY STILLMAN PROPERTY AND THE BEGINNING OF A NON-TANGENT CURVE TO THE LEFT, HAVING A RADIUS OF 20.00 FEET; THENCE SOUTHWESTERLY ALONG THE ARC OF SAID CURVE 30.21 FEET, THROUGH A CENTRAL ANGLE OF 86°13'00"; CHORD OF SAID CURVE BEARS S46°44'17"W 27.42 FEET; THENCE S88°06'52"W 72.31 FEET TO THE BEGINNING OF A NON-TANGENT CURVE TO THE LEFT, HAVING A RADIUS OF 20.00 FEET; THENCE NORTHWESTERLY ALONG THE ARC OF SAID CURVE 32.61 FEET, THROUGH A CENTRAL ANGLE OF 93°25'35"; CHORD OF SAID CURVE BEARS N43°16'36"W 29.12 FEET; THENCE N89°59'15"W 88.97 FEET; THENCE S05°06'41"W 64.81 FEET; THENCE S84°35'20"E 361.10 FEET TO THE NATIONAL NOTE OF UTAH LC PROPERTY; THENCE ALONG SAID BOUNDARY S00°00'35"W 197.24 FEET; THENCE S35°49'20"W 139.59 FEET; THENCE S89°59'24"E 881.16 FEET; THENCE S00°27'44"W 439.51 FEET; THENCE S89°59'24"E 28.92 FEET TO THE BEGINNING OF A TANGENT CURVE TO THE LEFT, HAVING A RADIUS OF 49.50 FEET; THENCE NORTHEASTERLY ALONG THE ARC OF SAID CURVE 48.72 FEET, THROUGH A CENTRAL ANGLE OF 56°23'24"; CHORD OF SAID CURVE BEARS N61°48'54"E 46.78 FEET TO THE BEGINNING OF A REVERSE CURVE TO THE RIGHT, HAVING A RADIUS OF 86.00 FEET; THENCE EASTERLY ALONG THE ARC OF SAID CURVE 141.44 FEET, THROUGH A CENTRAL ANGLE 94°14'04"; CHORD OF SAID CURVE BEARS N80°44'14"E 126.03 FEET TO THE BEGINNING OF A REVERSE CURVE TO THE LEFT, HAVING A RADIUS OF 49.50 FEET; THENCE SOUTHWESTERLY ALONG THE ARC OF SAID CURVE 32.69 FEET, THROUGH A CENTRAL ANGLE OF 37°50'38"; CHORD OF SAID CURVE BEARS S71°04'03"E 32.10 FEET; THENCE S89°59'24"E 105.52 FEET TO THE BEGINNING OF A TANGENT CURVE TO THE LEFT, HAVING A RADIUS OF 20.00 FEET; THENCE NORTHEASTERLY ALONG THE ARC OF SAID CURVE 31.26 FEET, THROUGH A CENTRAL ANGLE OF 89°32'52"; CHORD OF SAID CURVE BEARS N45°47'10"E 28.17 FEET TO THE WESTERLY LINE OF SWEETWATER ROAD; THENCE ALONG SAID RIGHT OF WAY S00°27'44"W 155.00 FEET TO THE BEGINNING OF A NON-TANGENT CURVE TO THE LEFT, HAVING A RADIUS OF 20.00 FEET; THENCE NORTHWESTERLY ALONG THE ARC OF SAID CURVE 31.58 FEET, THROUGH A CENTRAL ANGLE OF 90°28'11"; CHORD OF SAID CURVE BEARS N44°45'50"W 28.40 FEET; THENCE N89°59'24"W 104.28 FEET TO THE BEGINNING OF A TANGENT CURVE TO THE LEFT, HAVING A RADIUS OF 49.50 FEET; THENCE SOUTHWESTERLY ALONG THE ARC OF SAID CURVE 32.70 FEET, THROUGH A CENTRAL ANGLE OF 37°51'02"; CHORD OF SAID CURVE BEARS S71°05'05"W 32.11 FEET TO THE BEGINNING OF A REVERSE CURVE TO THE RIGHT, HAVING A RADIUS OF 86.00 FEET; THENCE WESTERLY ALONG THE ARC OF SAID CURVE 141.46 FEET, THROUGH A CENTRAL ANGLE OF 94°14'42"; CHORD OF SAID CURVE BEARS N80°43'05"W 126.04 FEET TO THE BEGINNING OF A REVERSE CURVE TO THE LEFT, HAVING A RADIUS OF 49.50 FEET; THENCE NORTHWESTERLY ALONG THE ARC OF SAID CURVE 48.72 FEET, THROUGH A CENTRAL ANGLE OF 56°23'40"; CHORD OF SAID CURVE BEARS N81°47'34"W 46.78 FEET; THENCE N89°59'24"W 29.32 FEET; THENCE S00°27'43"W 1061.48 FEET; THENCE S89°59'25"E 350.01 FEET TO THE WESTERLY LINE OF SWEETWATER ROAD; THENCE ALONG SAID RIGHT OF WAY S00°27'43"W 123.97 FEET; THENCE N89°59'23"W 2885.74 FEET; THENCE S00°01'14"W 147.66 FEET; THENCE S04°00'52"W 50.12 FEET; THENCE S00°00'33"W 1277.87 FEET; THENCE S03°59'38"E 50.12 FEET; THENCE S00°00'37"W 274.38 FEET TO A POINT 77.00 FEET, MEASURED PERPENDICULARLY, SOUTH OF THE SOUTHERLY LINE OF SECTION 14, TOWNSHIP 6 SOUTH, RANGE 2 WEST, SALT LAKE BASE AND MERIDIAN; THENCE S89°59'34"W 2549.25 FEET PARALLEL TO SAID SECTION LINE, THENCE N00°22'01"E 77.00 FEET TO THE SOUTH 1/4 CORNER OF SAID SECTION 14, THENCE N89°58'34"W 2665.96 FEET TO THE SOUTHWEST CORNER OF SAID SECTION 14; THENCE N00°23'14"E 2661.94 FEET TO THE WEST 1/4 CORNER OF SAID SECTION 14; THENCE N00°23'10"E 2668.46 FEET TO THE NORTHWEST CORNER OF SAID SECTION 14 AND POINT OF BEGINNING. CONTAINING 794.837 ACRES, MORE OR LESS.

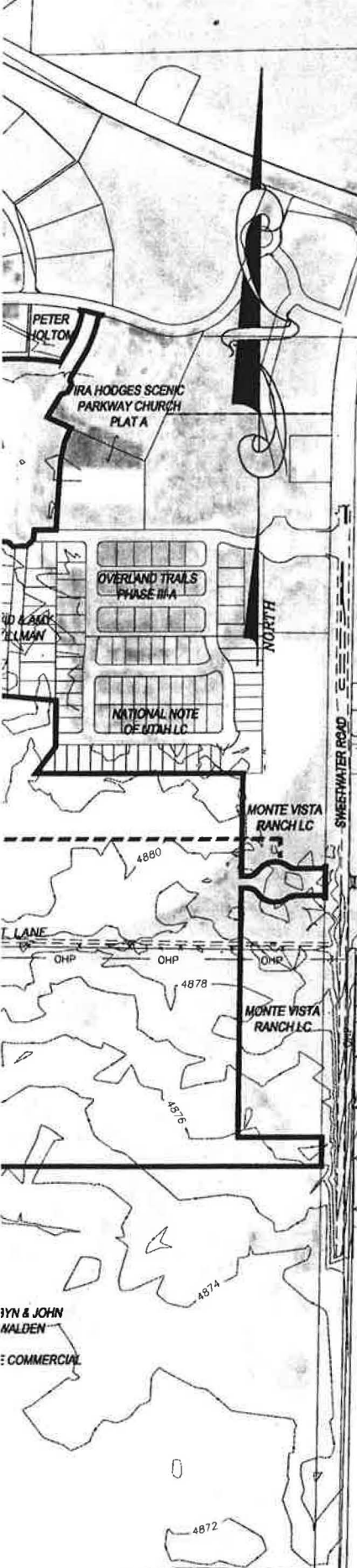
LESS AND EXCEPTING THAT PORTION GRANTED TO AL KENT & DEBRA C. SIEVERS IN SPECIAL WARRANTY DEED, ENTRY #112245, RECORDED OCTOBER 1, 2004, THEREIN DESCRIBED AS FOLLOWS:

BEGINNING AT A POINT WHICH IS N00°05'47"E 70.00 FEET (ALONG THE SECTION LINE) AND S89°59'09"W 262.71 FEET FROM THE SOUTHEAST CORNER OF SECTION 14, TOWNSHIP 6 SOUTH, RANGE 2 WEST, SALT LAKE BASE AND MERIDIAN; THENCE S89°59'09"W 1435.48 FEET; THENCE NORTH 179.31 FEET; THENCE N19°03'47"E 152.06 FEET; THENCE EAST 1285.03 FEET; THENCE 203.55 FEET ON THE ARC OF A NON-TANGENT CURVE TO THE LEFT HAVING A RADIUS OF 1927.50 FEET THROUGH AN ANGLE OF 06°03'01" (CENTER OF CURVE BEARS N63°19'44"E 1927.50 FEET), CHORD BEARS S29°41'47"E 203.45 FEET; THENCE SOUTH 145.94 FEET TO THE POINT OF BEGINNING. CONTAINING 10.344 ACRES, MORE OR LESS.

ALSO LESS AND EXCEPTING THAT PORTION GRANTED TO ALPINE SCHOOL DISTRICT IN WARRANTY DEED, ENTRY #42556:2008, RECORDED APRIL 10, 2008, DESCRIBED AS FOLLOWS:

BEGINNING AT A POINT N89°32'44"W ALONG THE SECTION LINE 442.40 FEET AND NORTH 39.97 FEET FROM THE NORTHEAST CORNER OF SECTION 14, TOWNSHIP 6 SOUTH, RANGE 2 WEST, SALT LAKE BASE AND MERIDIAN; THENCE S32°16'15"E 313.02 FEET TO THE BEGINNING OF A TANGENT CURVE TO THE RIGHT HAVING A RADIUS OF 574.50 FEET; THENCE SOUTHEASTERLY ALONG THE ARC OF SAID CURVE 161.57 FEET THROUGH A CENTRAL ANGLE OF 16°06'49"; CHORD OF SAID CURVE BEARS S24°12'51"E 161.04 FEET TO THE BEGINNING OF A REVERSE CURVE TO THE LEFT HAVING A RADIUS OF 525.50 FEET; THENCE SOUTHEASTERLY ALONG THE ARC OF SAID CURVE 221.56 FEET THROUGH A CENTRAL ANGLE OF 24°09'23"; CHORD OF SAID CURVE BEARS S28°14'08"E 219.92 FEET TO THE BEGINNING OF A REVERSE CURVE TO THE RIGHT HAVING A RADIUS OF 15.00 FEET; THENCE SOUTHERLY ALONG THE ARC OF SAID CURVE 22.58 FEET THROUGH A CENTRAL ANGLE OF 86°14'10"; CHORD OF SAID CURVE BEARS S02°48'15"W 20.51 FEET TO THE BEGINNING OF A COMPOUND CURVE TO THE RIGHT HAVING A RADIUS OF 1,363.50 FEET; THENCE SOUTHWESTERLY ALONG THE ARC OF SAID CURVE 103.02 FEET THROUGH A CENTRAL ANGLE OF 04°19'45"; CHORD OF SAID CURVE BEARS S48°05'13"W 103.00 FEET; THENCE S50°15'05"W 562.97 FEET; THENCE N39°44'55"W 700.00 FEET; THENCE N50°15'05"E 807.52 FEET TO THE POINT OF BEGINNING, CONTAINING 12.000 ACRES, MORE OR LESS.

NET ACREAGE = 772.493 ACRES, MORE OR LESS.



NO.	DATE	DESCRIPTION	BY

H&H
ENGINEERING AND SURVEYING, INC.
 233 E MAIN ST., STE 2, AMERICAN FORK, UT 84003
 TEL: (801) 756-2468 FAX: (801) 756-3499

HARMONY
EXISTING SITE PLAN

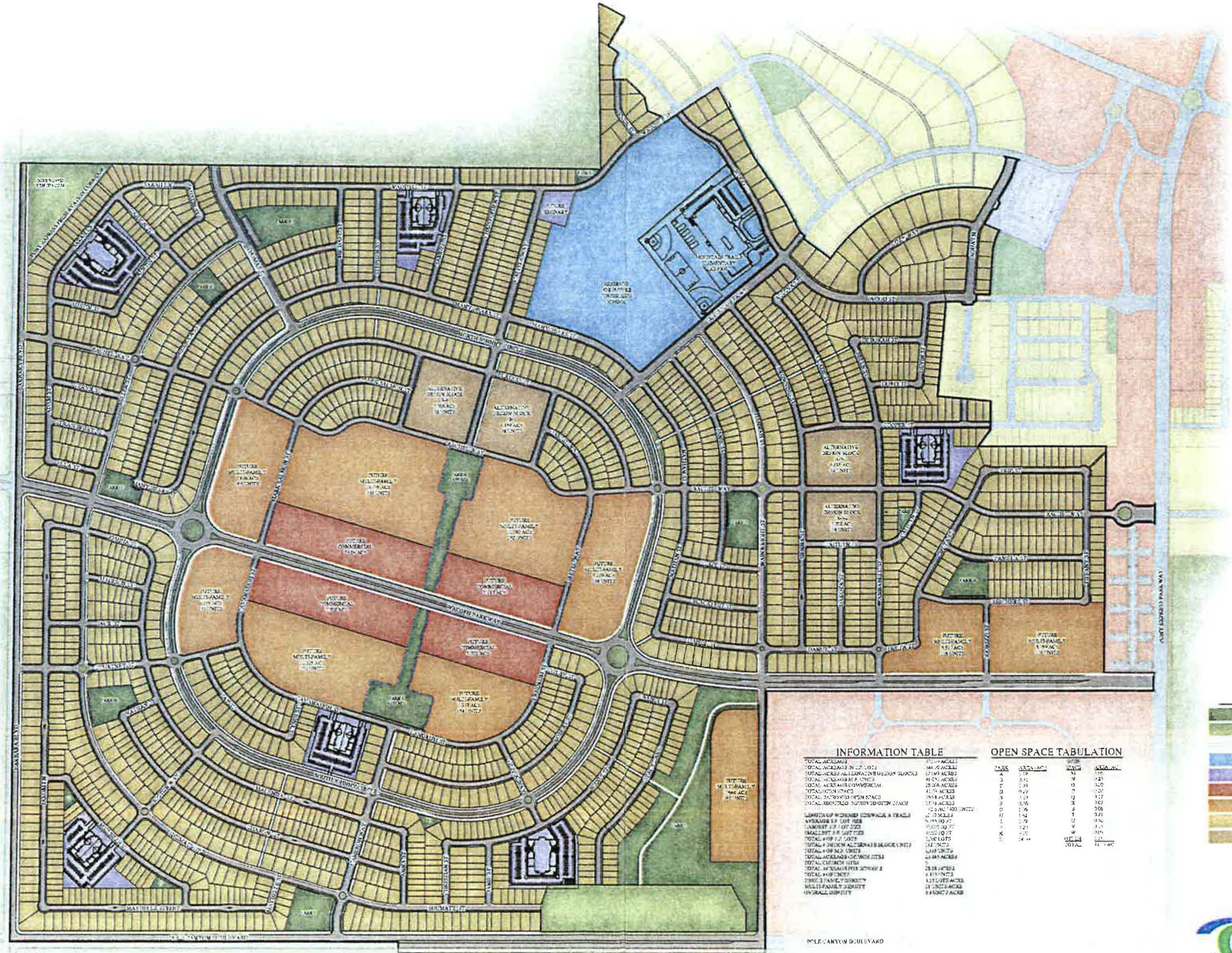
Exhibit B 93083:2018 PG 14 of 16

[Harmony Preliminary Plan and Plat]



HARMONY AT CITY CENTER

EAGLE MOUNTAIN COMMUNITIES



INFORMATION TABLE

TOTAL ACRES	171.00 ACRES
TOTAL ACRES IN LOT 102	168.00 ACRES
TOTAL ACRES ALTERNATIVE DESIGN BLOCKS	171.00 ACRES
TOTAL ACRES IN LOT 102	168.00 ACRES
TOTAL ACRES COMMERCIAL	25.00 ACRES
TOTAL ACRES CIVIC	1.00 ACRES
TOTAL ACRES CHURCH	0.00 ACRES
TOTAL ACRES COMMERCIAL	25.00 ACRES
TOTAL ACRES MULTIFAMILY RESIDENTIAL	125.00 ACRES
TOTAL ACRES SINGLE FAMILY RESIDENTIAL	41.00 ACRES
TOTAL ACRES ALTERNATIVE DESIGN BLOCKS	171.00 ACRES
TOTAL ACRES OPEN SPACE	171.00 ACRES
TOTAL ACRES UNIMPROVED OPEN SPACE	171.00 ACRES
TOTAL ACRES PARKS AND OPEN SPACE	171.00 ACRES
TOTAL ACRES TRAILS	171.00 ACRES
TOTAL ACRES CIVIC	1.00 ACRES
TOTAL ACRES CHURCH	0.00 ACRES
TOTAL ACRES COMMERCIAL	25.00 ACRES
TOTAL ACRES MULTIFAMILY RESIDENTIAL	125.00 ACRES
TOTAL ACRES SINGLE FAMILY RESIDENTIAL	41.00 ACRES
TOTAL ACRES ALTERNATIVE DESIGN BLOCKS	171.00 ACRES

OPEN SPACE TABULATION

TYPE	ACRES	PERCENT	TOTAL
PARKS AND OPEN SPACE	171.00	100%	171.00
UNIMPROVED OPEN SPACE	171.00	100%	171.00
TRAILS	171.00	100%	171.00
CIVIC	1.00	0.6%	1.00
CHURCH	0.00	0.0%	0.00
COMMERCIAL	25.00	14.6%	25.00
MULTIFAMILY RESIDENTIAL	125.00	73.1%	125.00
SINGLE FAMILY RESIDENTIAL	41.00	23.9%	41.00
ALTERNATIVE DESIGN BLOCKS	171.00	100%	171.00

LEGEND

- PARKS AND OPEN SPACE
- UNIMPROVED OPEN SPACE
- TRAILS
- CIVIC
- CHURCH
- COMMERCIAL
- MULTIFAMILY RESIDENTIAL
- SINGLE FAMILY RESIDENTIAL
- ALTERNATIVE DESIGN BLOCK



POLE CANYON BOULEVARD