



LITTLE BLUESTEM

Schizachyrium scoparium

Upright bluish-green foliage turns to shades of red changing to deep purple in the fall.

Shimmering seed heads remain throughout the winter. Adaptable to poor, dry soils.

Zones: 3-8 **H x W:** 24-36" x 15-18"

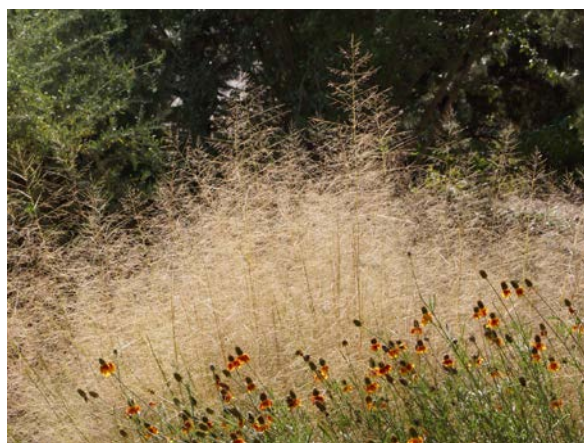


INDIAN GRASS

Sorghastrum nutans

A tall, upright grass with showy golden bronze heads in the fall that provide seed for songbirds.

Zones: 4-9 **H x W:** 6-8' x 24-36"



ALKALI SACATON

Sporobolus airoides

Airy grass native to salty, rocky, high desert soils. Adaptable to both heavy clay and well-drained sandy soils. Very tough, yet very beautiful.

Zones: 5-8 **H x W:** 24-36" x 24-36"



KEY TO SYMBOLS

-  **full sun**
-  **part shade**
-  **full shade**
-  **very little water**
-  **low water**
-  **moderate water**

Note: water plants regularly after planting until root systems are well-established then reduce watering.

EXTENSION 

UtahStateUniversity

Utah State University is an affirmative action/equal opportunity institution.



CENTER FOR WATER
EFFICIENT LANDSCAPING

10 Low-Water Ornamental Grasses

*Ideal for
Water-Efficient Landscapes
in Eagle Mountain, Utah*

Adrea Wheaton, Larry Rupp & Michael Caron

EXTENSION 

UtahStateUniversity



SILVER SPIKE GRASS (*Achnatherum calamagrostis*)

EXTENSION.USU.EDU



SILVER SPIKE GRASS



Achnatherum calamagrostis

Tall silver plumes emerge from an arching mound of bright green foliage. European native that is well-adapted to drought. Self-seeding.

Zones: 4-9 **H x W:** 24-36" x 24-36"



INDIAN RICE GRASS



Achnatherum hymenoides

One of the most attractive native grasses with an airy texture. Seeds are an important food source for many birds. Fibrous roots are good for erosion control.

Zones: 3-9 **H x W:** 12-24" x 12-24"



BLUE GRAMA



Bouteloua gracilis 'Blonde Ambition'

Distinctive 'eyebrow' seedheads add interest.

Zones: 4-9 **H x W:** 30-36" x 30-36"



BLUE FESCUE



Festuca glauca

A low, mounded grass with fine blue foliage.

Zones: 4-10 **H x W:** variable



ATLAS FESCUE



Festuca mairei

Arching, bright green leaves form an attractive mound. **Zones:** 4-8 **H x W:** 24-36" x 24-36"



RUBY MUHLY GRASS



Muhlenbergia reverchonii 'Undaunted'

Showy pink flowering plumes cover this ornamental grass late summer into fall. Tolerant of clay soils. 'Undaunted' is a cold hardy selection of this southeastern native.

Zones: 5-9 **H x W:** 24-36" x 18-34"



SWITCHGRASS



Panicum virgatum

Mid-size grass with panicles of airy purplish flowers late summer. Tips of the blue-green foliage turn red to orange in the fall.

Zones: 4-9 **H x W:** 3-5' x 2'



MEXICALI HYBRID PENSTEMON



Penstemon mexicali

These hybrid penstemons are long-blooming selections with mounded, bright green foliage. Tubular flowers in shades of pink, purple, red or white attract bees and hummingbirds. Reseeds.

Zones: 4-10 **H x W:** 12-24" x 8-18"



MEADOW SAGE



Salvia nemerosa

Many selections of this tough and beautiful plant available from pale pinks to dark blues. Flowers form on dense spikes and attract pollinators.

Zones: 3-8 **H x W:** 18-24" x 8-18"



SUNDANCER DAISY



Tetranneuris acaulis 'Sol Dancer'

Small, ever-blooming perennial with tight mounds of small, grass-like leaves and yellow, daisy-like flowers on slender stems. Blooms all summer long. **Zones:** 5-10 **H x W:** 15" x 15"

KEY TO SYMBOLS

-  **full sun**
-  **part shade**
-  **full shade**
-  **very little water**
-  **low water**
-  **moderate water**

Note: water plants regularly after planting until root systems are well-established then reduce watering.

EXTENSION 

UtahStateUniversity

Utah State University is an affirmative
action/equal opportunity institution.



CENTER FOR WATER
EFFICIENT LANDSCAPING

10 Low-Water Perennials *Ideal for Water-Efficient Landscapes in Eagle Mountain, Utah*

Adrea Wheaton, Larry Rupp & Michael Caron

EXTENSION 
UtahStateUniversity



INDIAN BLANKET FLOWER (*Gaillardia* spp.)

EXTENSION.USU.EDU



HARDY PLUMBAGO ☀️🌑🌑💧💧

Ceratostigma plumbaginoides

Versatile groundcover that can handle sun and shade. Shiny green foliage turns deep red in fall. Bright blue flowers bloom late summer into the fall. **Zones:** 5-9 **H x W:** 8-12" x 12"



FIRE CHALICE ☀️🌑🌑💧💧

Epilobium garrettii 'Wasatch Fire'

Spreading groundcover with masses of orange-scarlet flowers in summer. Hummingbird magnet. Deer resistant. **Zones:** 5-9 **H x W:** 4-6" x 18-24"



INDIAN BLANKET FLOWER ☀️💧

Gaillardia spp.

Long-blooming perennial in shades of yellow, orange and red. **Zones:** 4-10 **H x W:** variable



PRAIRIE SMOKE ☀️🌑🌑💧💧

Geum triflorum

Nodding, pink flowers in spring mature to wispy seedheads. **Zones:** 3-8 **H x W:** 6-18" x 6-12"



LENTEN ROSE ☀️🌑💧

Helleborus orientalis

Stunning flowers bloom very early in the spring. **Zones:** 4-9 **H x W:** 12" x 36"



DESERT FOUR O'CLOCK ☀️🌑

Mirabilis multiflora

Low-growing, colorful perennial spreads from taproot and dies back completely at the end of the season. Masses of magenta blooms all summer. **Zones:** 4-6 **H x W:** 12-24" x 4-6"



SCARLET MONARDELLA ☀️🌑🌑🌑

Monardella macrantha

Intensely aromatic herb forms low mounds of semi-evergreen foliage covered by clusters of scarlet-orange trumpets in late spring. Attracts hummingbirds. **Zones:** 5-9 **H x W:** 4-6" x 8-12"



'PAWNEE BUTTES' SAND CHERRY



Prunus besseyi 'Pawnee Buttes'
A groundcover form of the native sand cherry. Long season of interest with fragrant, white flowers on bare branches in the spring and orange/red fall color.

Zones: 3-8 **H x W:** 15-18" x 4-6"



'KNOCK OUT' SHRUB ROSE



Rosa 'Radrazz'
Trouble-free, small shrub with cherry-red roses that bloom all summer. Consistent irrigation promotes continuous blooms.

Zones: 4-10 **H x W:** 3-4' x 3-4'



HARRIMAN'S YUCCA



Yucca harrimaniae

Narrow, blue green leaves of the yucca make a nice architectural plant. Creamy flowers on tall stalks attract moths. Plant in appropriate location where sharp tips will not be a problem.

Zones: 4-8 **H x W:** 2-3' x 2-3'

KEY TO SYMBOLS

-  full sun
-  part shade
-  full shade
-  very little water
-  low water
-  moderate water

Note: water plants regularly after planting until root systems are well-established then reduce watering.

EXTENSION

UtahStateUniversity

Utah State University is an affirmative action/equal opportunity institution.



CENTER FOR WATER
EFFICIENT LANDSCAPING

10 Low-Water Shrubs

*Ideal for
Water-Efficient Landscapes
in Eagle Mountain, Utah*

Adrea Wheaton, Larry Rupp & Michael Caron

EXTENSION
UtahStateUniversity



FERNBUSH (*Chamaebatiaria millefolium*)

EXTENSION.USU.EDU



MOCK BEARBERRY MANZANITA



Arctostaphylos x coloradensis

Woody, evergreen groundcover with urn-shaped, white flowers that produce small red berries.

Zones: 5-8 **H x W:** 10-24" x 36-60"



'POWIS CASTLE' ARTEMISIA



Artemisia x 'Powis Castle'

Pleasing mounded shape with silvery gray foliage that is also fragrant. Sub-shrub that can be cut back to 1/3 to rejuvenate growth.

Zones 4-10 **H x W:** 36" x 30"



CREeping OREGON GRAPE

Berberis (Mahonia) repens 

Holly-shaped evergreen leaves and fragrant yellow flowers. **Zones:** 4-7 **H x W:** 12-18" x 36"



BLUE MIST SPIREA

Caryopteris x clandonensis



Mounded shrub covered in blue flowers late summer. **Zones:** 5-9 **H x W:** 2-4' x 2-4'



FERNBUSH

Chamaebatiaria millefolium



Finely divided foliage and showy white flowers.

Zones: 4-8 **H x W** 3-6' x 3-6'



CREeping JUNIPER



Juniperus spp.

Low-growing, junipers are an ideal groundcover on slopes. Adaptable plant for tough locations. Deer resistant.

Zones: 3-6 **H x W:** 12" x 24-36"



LAVENDER



Lavandula spp.

Mounded silver-gray foliage with long fragrant blooms. A variety of sizes and colors that range in color from dark purple to white.

Zones: 5-10 **H x W:** variable



AUSTRIAN PINE

Pinus nigra

Large conifer with long, dark green needles. Well-adapted to Utah. Smaller, more compact selections are available. Pictured above is 'Arnold Sentinel'.

Zones: 5-8 **H x W:** 50-80' x 25-40'



GAMBEL OAK

Quercus gambelii

Grows in dense clumps or stands and spreads through root sprouts. Good for slopes and tough, dry sites. Native.

Zones: 4-8 **H x W:** 20-30' x 15-20'



BUR OAK

Quercus macrocarpa

Very large deciduous tree with interesting fringed acorns. Well-adapted to alkaline soils and drought conditions.

Zones: 3-8 **H x W:** 70-90' x 60-80'



KEY TO SYMBOLS

-  **full sun**
-  **part shade**
-  **full shade**
-  **very little water**
-  **low water**
-  **moderate water**

Note: water plants regularly after planting until root systems are well-established then reduce watering.

EXTENSION 

UtahStateUniversity

Utah State University is an affirmative action/equal opportunity institution.



CENTER FOR WATER
EFFICIENT LANDSCAPING

10 Low-Water Trees

*Ideal for
Water-Efficient Landscapes
in Eagle Mountain, Utah*

Adrea Wheaton, Larry Rupp & Michael Caron

EXTENSION 
UtahStateUniversity



'HOT WINGS' TATARIAN MAPLE (*Acer tataricum*)

EXTENSION.USU.EDU



'HOT WINGS' TATARIAN MAPLE



Acer tataricum 'Hot Wings'

Brilliant red samaras look like flaming flowers in summer. Attractive small tree with showy fall color.

Zones: 4-10 **H x W:** 15-18' x 15-18'



RUSSIAN HAWTHORN



Crataegus ambigua

This small tree is smothered with flowers in the spring, followed by red fruit and golden fall color. Very drought tolerant once established.

Zones: 4-9 **H x W:** 16-20' 12-16'



HONEY LOCUST



Gleditsia tricanthos

Shade tree. Tolerant of cold, drought, salt and alkaline soils. **Zones:** 4-8 **H x W:** 30-35' x 30-35'



COLUMNAR JUNIPER



Juniperus scopulorum

Many columnar forms of this tough and adaptable native are available. **Zones:** 3-9 **H x W:** variable



GOLDEN RAIN TREE



Koelreuteria paniculata

Unusual lantern-shaped seed pods in summer.

Zones: 5-9 **H x W** 20-30' x 25-35'



CRABAPPLE



Malus spp.

Crabapples are excellent small trees for borders or street trees. Newer cultivars have persistent fruit that hold to the tree instead of falling on sidewalks or patios. Stunning spring flowers.

Zones: 3-9 **H x W:** 15-25' x 15-25'



PINYON PINE



Pinus edulis

This slow-growing native pine is very drought tolerant, has nice blue-green needles and edible pine nuts.

Zones: 4-8 **H x W:** 20-35' x 10-15'