

NORTHWEST CORNER
SECTION 14
TOWNSHIP 5 SOUTH,
RANGE 2 WEST, S.L.B.&M.

NORTH QUARTER CORNER
SECTION 14
TOWNSHIP 5 SOUTH,
RANGE 2 WEST, S.L.B.&M.

CAMP WILLIAMS
(NO PARCEL INFO PROVIDED ONLINE)

POINT OF
BEGINNING

NORTHEAST CORNER
SECTION 14
TOWNSHIP 5 SOUTH,
RANGE 2 WEST, S.L.B.&M.

S 89°03'23" E 1363.63'
S 89°27'38" E 2646.02'

S 89°03'23" E
1363.63'

N 00°45'35" E 1327.91'

S 89°02'48" W 1356.42'

SHIRLEY BUTTERFIELD, LTD
PARCEL ID No. 58-044-0012

BUTTERFIELD ANNEXATION
204.69 ACRES

SHIRLEY BUTTERFIELD, LTD
PARCEL ID No. 58-044-0011

STEVE SMITH
PARCEL ID No. 58-044-0013
245.86

CENTER QUARTER CORNER
SECTION 14
TOWNSHIP 5 SOUTH,
RANGE 2 WEST, S.L.B.&M.

N 89°02'13" W 2687.78'
(S 89°02'22" E 2687.84)

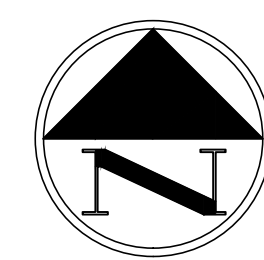
CLEARVIEW ESTATES ANNEXATION
ENTRY No. 88521:2012 MAP No. 13764
RECORDED OCTOBER 11, 2012

EAST QUARTER CORNER
SECTION 14
TOWNSHIP 5 SOUTH,
RANGE 2 WEST, S.L.B.&M.

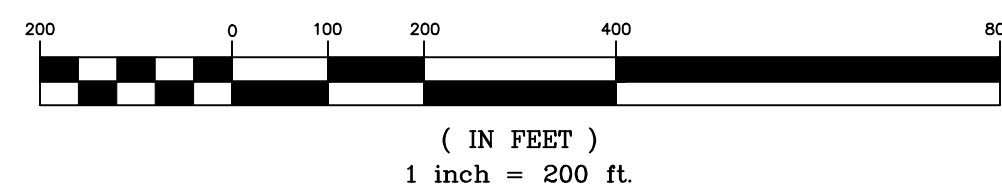
NORTHEAST CORNER
SECTION 14
TOWNSHIP 5 SOUTH,
RANGE 2 WEST, S.L.B.&M.

N 89°02'13" W 2698.41'

WEST QUARTER CORNER
SECTION 14
TOWNSHIP 5 SOUTH,
RANGE 2 WEST, S.L.B.&M.



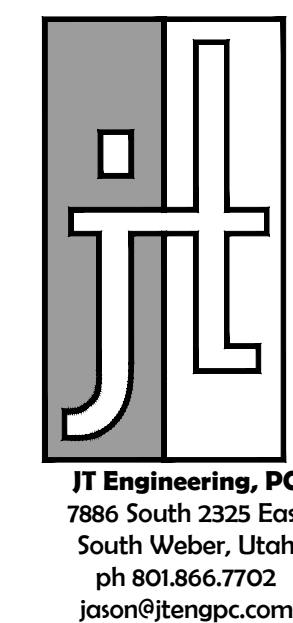
GRAPHIC SCALE



LEGEND

- SECTION LINE
- EXISTING CITY BOUNDARY LINE
- ANNEXATION BOUNDARY LINE

(xxx.xx)
INFORMATION IN PARENTHESIS IS RECORD INFORMATION
BASED ON THE ANNEXATION MAPS REFERENCED HEREON



SURVEYOR'S CERTIFICATE:

I, WILLIS D. LONG DO HEREBY CERTIFY THAT I AM A LICENSED PROFESSIONAL LAND SURVEYOR IN THE STATE OF UTAH IN ACCORDANCE WITH TITLE 58, CHAPTER 22, PROFESSIONAL ENGINEERS AND LAND SURVEYORS LICENSING ACT, AND THAT I HAVE COMPLETED A SURVEY OF THE PROPERTY DESCRIBED ON THIS PLAT IN ACCORDANCE WITH SECTION 17-23-17 AND HAVE VERIFIED ALL MEASUREMENTS, AND THAT THIS PLAT, IN UTAH COUNTY, UTAH, HAS BEEN DRAWN CORRECTLY TO THE DESIGNATED SCALE AND IS A TRUE AND CORRECT REPRESENTATION OF THE HEREIN DESCRIBED LANDS INCLUDED IN SAID ANNEXATION, BASED UPON DATA COMPILED FROM RECORDS IN THE UTAH COUNTY RECORDER'S OFFICE AND FROM SAID SURVEY MADE BY ME ON THE GROUND. I FURTHER CERTIFY THAT THE REQUIREMENTS OF APPLICABLE STATUTES AND ORDINANCES OF UTAH COUNTY HAVE BEEN COMPLIED WITH.



JUNE 10, 2020
DATE:

WILLIS D. LONG
LICENSE NO. 10708886

ANNEXATION BOUNDARY DESCRIPTION:

BEGINNING AT THE NORTHEAST CORNER OF SECTION 14, TOWNSHIP 5 SOUTH, RANGE 2 WEST, SALT LAKE BASE AND MERIDIAN AND RUNNING THENCE, SOUTH 00°10'27" WEST, ALONG THE SECTION LINE COMMON WITH SECTIONS 13 AND 14, A DISTANCE OF 2676.08 FEET TO THE EAST QUARTER CORNER OF SAID SECTION 14; THENCE, NORTH 89°02'13" WEST, ALONG THE EAST-WEST CENTER QUARTER LINE, A DISTANCE OF 2687.78 FEET TO THE CENTER QUARTER CORNER OF SAID SECTION 14; THENCE NORTH 01°04'15" EAST, ALONG THE NORTH-SOUTH CENTER QUARTER LINE, A DISTANCE OF 1328.13 FEET TO THE EAST-WEST 40-ACRE LINE OF THE NORTHWEST QUARTER OF SECTION 14; THENCE, NORTH 89°02'48" WEST, ALONG SAID EAST-WEST 40-ACRE LINE, A DISTANCE OF 1356.42 FEET TO THE NORTH-SOUTH 40-ACRE LINE OF SAID NORTHWEST QUARTER OF SECTION 14; THENCE NORTH 00°45'35" EAST, ALONG SAID NORTH-SOUTH 40-ACRE LINE, A DISTANCE OF 1327.91 FEET TO THE SECTION LINE COMMON WITH SECTIONS 11 AND 14; THENCE, SOUTH 89°03'23" EAST, ALONG SAID SECTION LINE, A DISTANCE OF 1363.63 FEET TO THE NORTH QUARTER CORNER OF SAID SECTION 14; THENCE, SOUTH 89°27'38" EAST, ALONG THE SECTION LINE COMMON WITH SECTIONS 11 AND 14, A DISTANCE OF 2646.02 FEET TO THE NORTHEAST CORNER OF SECTION 14 AND THE POINT OF BEGINNING OF THIS DESCRIPTION.
CONTAINS 204.69 ACRES (MORE OR LESS)

ACCEPTANCE BY LEGISLATIVE BODY:

THIS IS TO CERTIFY THAT WE, THE UNDERSIGNED EAGLE MOUNTAIN CITY COUNCIL, HAVE ADOPTED A PETITION OF ITS INTENT TO ANNEX THE TRACT OF LAND SHOWN HEREIN AND HAVE SUBSEQUENTLY ADOPTED AN ORDINANCE ANNEXING SAID TRACT INTO EAGLE MOUNTAIN CITY, UTAH AND THAT A COPY OF THE ORDINANCE HAS BEEN PREPARED FOR FILING HERewith ALL IN ACCORDANCE WITH UTAH CODE SECTION 10-2-418, AS REVISED, AND THAT WE HAVE EXAMINED AND DO HEREBY APPROVE AND ACCEPT THE ANNEXATION OF THE TRACT AS SHOWN AS PART OF SAID CITY AND THAT SAID TRACT OF LAND IS TO BE KNOWN HEREAFTER AS THE BUTTERFIELD ANNEXATION.

DATED THIS ___ DAY OF _____, A.D. 20__

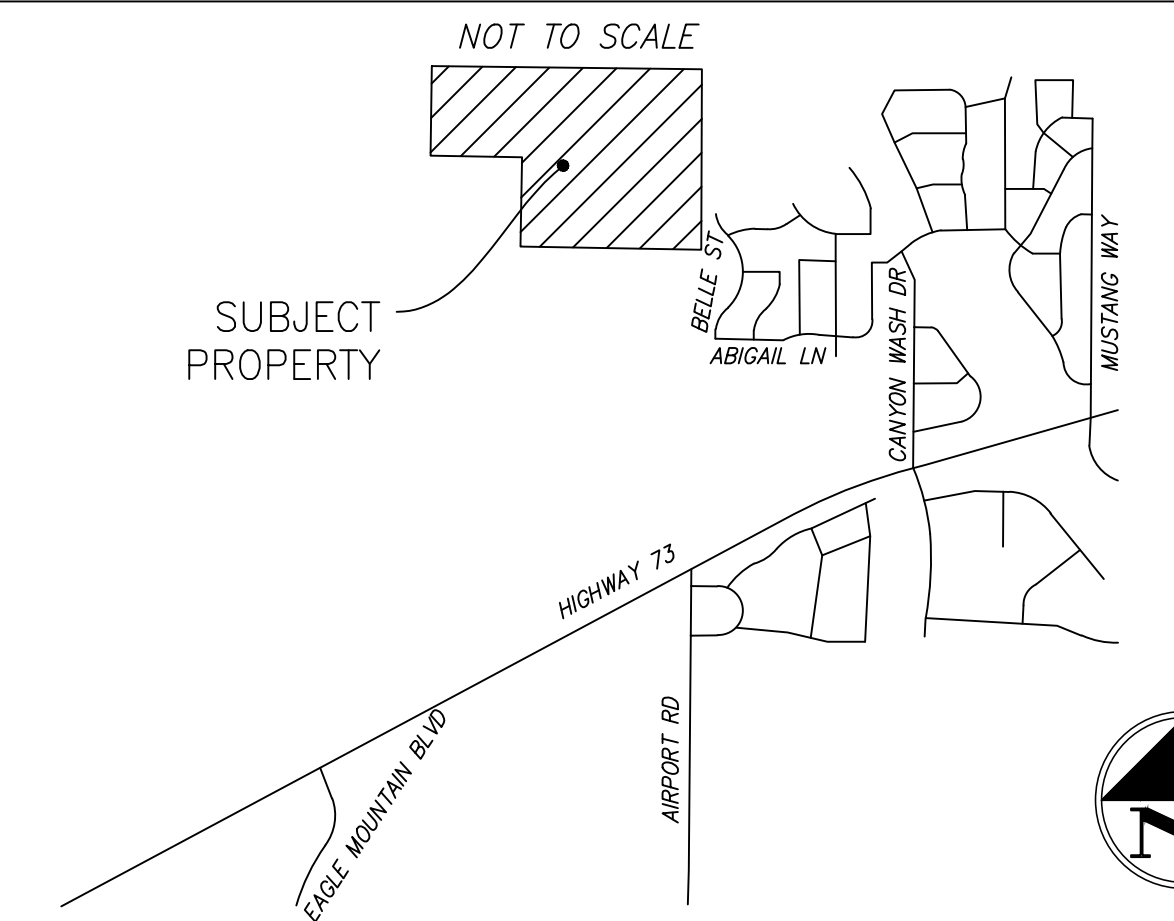
ATTEST: _____
RECORDER
DATE: _____

UTAH COUNTY SURVEYOR

THIS PLAT HAS BEEN REVIEWED BY THE COUNTY SURVEYOR AND IS HEREBY CERTIFIED AS A FINAL LOCAL ENTITY PLAT, PURSUANT TO UTAH CODE ANNOTATED 817-23-20 AS AMENDED.

UTAH COUNTY SURVEYOR
DATE

LOCATION MAP



ANNEXATION PLAT

BUTTERFIELD ANNEXATION

EAGLE MOUNTAIN, UTAH COUNTY, UTAH
SCALE: 1" = 200 FEET