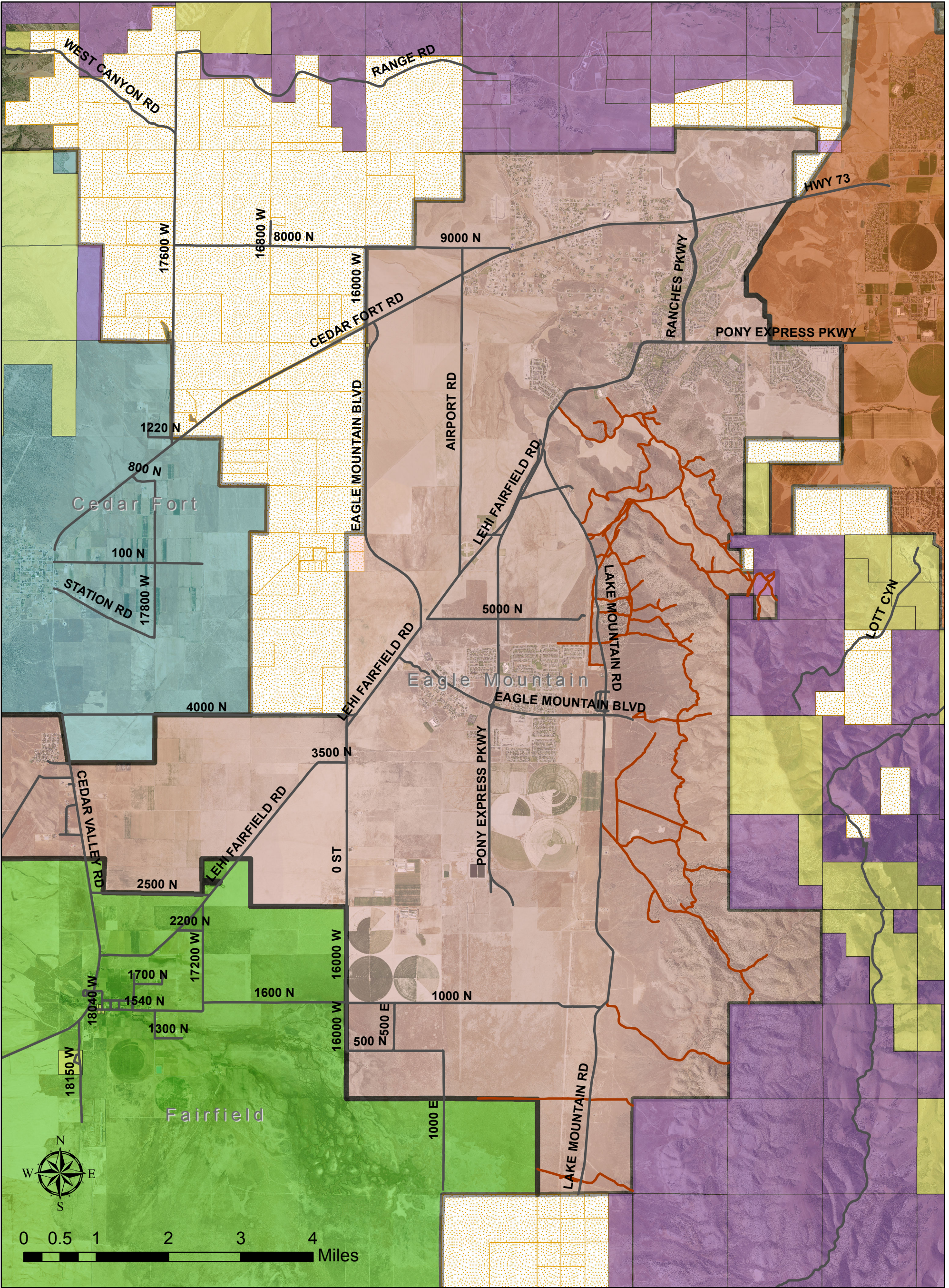











Eagle Mountain and Surrounding Land Ownership



- | | | | |
|--|---------------------|---|--------------|
|  | Eagle Mountain City |  | SITLA_Land |
|  | Saratoga Springs |  | Private_Land |
|  | Cedar Fort |  | Roads |
|  | Fairfield |  | 4WD Roads |
|  | BLM | | |

Discharging a firearm within Eagle Mountain City Limits is prohibited. Please visit http://www.blm.gov/ut/st/en/fo/salt_lake/recreation/target_shooting.html For information on shooting on public land.



**EAGLE
MOUNTAIN**

Disclaimer: Eagle Mountain City makes no warranty with respect to The accuracy, completeness, or usefulness of these maps. Eagle Mountain City assumes no liability for direct, indirect, special, or consequential damages resulting from the use or misuse of these Maps or any of the information contained herein. Portions may be Copied for incidental uses, but may not be resold.

Contact Eagle Mountain City
Engineering/GIS Department
801-789-6662